

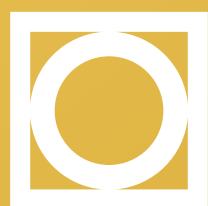


正大机电

C P M & E



做肉类食品全产业链的智能装备供应商和数智化服务商



正大机电
C P M & E

因为专业 所以放心

Specialized, so trusted



正大机电，是泰国正大集团旗下的机电装备产业群，竭诚为农牧食品企业，提供专业精良的成套装备和工程项目的系统解决方案。正大机电下辖8个公司，分别坐落在上海市松江工业开发区和浙江省慈溪现代农业开发区。正大机电所提供的机电装备和工程项目解决方案，汲取了正大集团引进的国外高端机电产品的技术精华，结合了正大集团100年的农牧业生产经验，能够帮助客户创造高价值、高回报。我们秉持“利国利民利企业”的三利经营宗旨，真诚分享在猪场建设、鸡场建设、饲料厂建设、食品厂建设以及农牧物流车辆方面的创新成果，助力世界农牧食品业的产业升级。



CP M&E is the electromechanical equipment industry group of CP Group Thailand. We are dedicated to providing professional and sophisticated complete sets of equipment and engineering system solutions for agricultural, animal husbandry and food enterprises. CP M&E has 8 companies, located in Songjiang Industrial Development Zone in Shanghai and Cixi Modern Agricultural Development Zone in Zhejiang Province. The electromechanical equipment and engineering project solutions provided by CP M&E draw on the technical quintessence of the high-end foreign electromechanical products introduced by the CP Group, and combine the 100 years of agricultural and animal husbandry production experience of CP Group, it can help customers create high value and high profitability. Adhering to the three-benefits business principle of "benefiting the country, benefiting the people, benefiting the enterprise", sincerely share our innovations in pig farm projects, chicken farm projects, feedmill projects, food factory projects and agri-logistics vehicles to help the industrial upgrading of the world's animal husbandry and food industry.

目录

正大机电公司介绍 Business Structure of CP Group(China)	01-02
正大集团（中国）业务架构 Business Structure of CP Group(China)	03
正大机电发展历程 Milestones of CP M&E	04-05
正大机电业务结构 Business Structure of CP M&E	06-07
公司荣誉 Corporate Honor	08
全球业务 Global Business	09
合作客户 Coperation and Service	10
各公司业务及产品介绍 Introduction to Business and Products	12-43
联系我们 Contact Us	44-45

CONTENTS

愿景 Vision

做肉类食品全产业链的智能装备供应商和数智化服务商

To be an intelligent equipment supplier and digital intelligence service provider for the entire meat food industry chain.

使命 Mission

我们为养殖场/饲料厂/食品厂提供精良的成套装备和EPC交钥匙服务

我们的数字化装备和服务，能够帮助用户实现经营生产的高效益

我们致力于促进肉类食品行业向环境友好/资源节约方向快速良性发展

We provide excellent complete equipment and EPC turnkey project for Farm/feed factory/food factory.

Our digital intelligence equipments and services can help users in achieving cost-effective production management.

Promote the rapid development of global meat industry in an eco-friendly/resource-effective manner.

核心价值观 Core Values

三利原则(利国、利民、利企业)

Three Benefits(Country People Company)

快速优质 Speed and Quality

化繁为简 Simplification

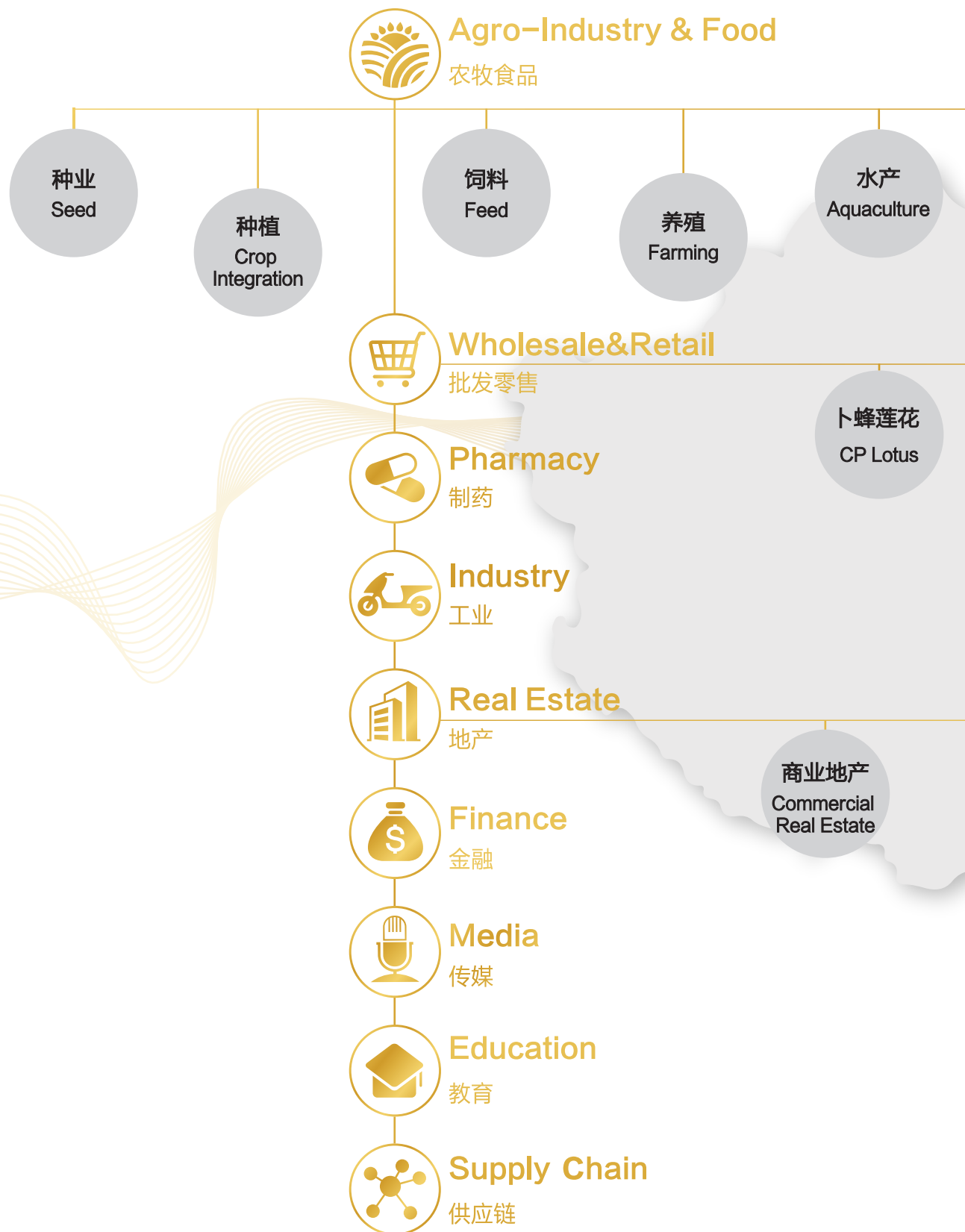
接受变革 Adaptation to change

不断创新 Innovativeness Integrity

正直诚信 Honesty&Reciprocity.

正大集团（中国）业务架构

Business Structure of CP Group(China)







正大机电发展历程

Milestones of CP M&E



· 上海正宜成立-以饲料工业为主体的饲料机械加工设备及配件制造商。

· Shanghai ZhengYi established.

1997



· 正诚获得建筑工程施工总承包三级，钢结构工程专业承包二级，建筑机电安装工程专业承包三级，高新技术企业称号；

· 正诚第一个EPC总包项目——邳州15400头养殖场通过验收。

· Complete the first EPC engineering project.

2016

1994

· 上海正诚成立-业务涵盖饲料厂整厂交钥匙工程及钢结构工程。

· Shanghai ZhengCheng established.



2015

· 正诚正宜经营业绩同比增长200%；

· 控股鑫百勤专用车辆有限公司；

· 新一届管理团队成立，确定新时期正大机电的愿景/使命/目标。

· Organization restructuring. Holding XinBaiQin.

2017

· 成立上海正诚牧正建筑工程分公司；

· 上海正诚自主研发的CPS饲料厂智能配料系统取得国家计算机软件著作权；

· 与美国AGCO公司合资成立正大谷瑞机电有限公司。

· CP-GSI established.



- 代表饲料厂4.0国际水平的内蒙古;
- 36万吨饲料厂顺利竣工;
- 鑫百勤搬迁至慈溪新工厂。
- Vehicle Manufacturing base established in CiXi.

2018



- 投资建成正大谷瑞慈溪现代化智能化畜禽设备生产基地;
- 正大机电第一个“五年规划”如期完成15400头养殖场通过验收。
- Intelligent manufacturing base established in CiXi.
- The first five-year plan completed on schedule.

2020

- 上海正牧建筑工程有限公司成立;
- 上海正宜被评为松江区“专精特新”企业。
- Shanghai Zhengmu Construction Engineering Co., Ltd. was established;
- Shanghai Zhengyi was rated as a "specialized, refined, and innovative" enterprise in Songjiang District.

2022

2019

- 与日本FUKUDA公司合资成立上海正福食品机械工程有限公司;
- 成立上海正诚江苏分公司。
- CP- FUCUDA established;
- Shanghai Zhengcheng Jiangsu Branch established.

2021

- 正大汽车租赁有限公司成立;
- 投资建成正大中国智能制造研发基地;
- 上海正诚被评为松江区“专精特新”企业。
- C.P. Vehicle leasing established;
- CP Group Agro-industry and Food Business China Area Intelligent Manufacturing R&D base established in Shan;
- Shanghai Zhengcheng was rated as a "specialized, refined, and innovative" enterprise in Songjiang District.



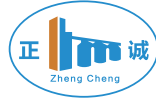
2023

- 上海正芯科融机器人科技有限公司成立。
- Shanghai Zhengxin Kerong Robot Technology Co., Ltd. was established.



正大机电业务结构

Business Structure of CP M&E



上海正诚机电制造有限公司



上海正宜机器工程技术制造有限公司



正大谷瑞机电有限公司



上海正福食品机械工程有限公司



鑫百勤专用车辆有限公司



正大汽车租赁有限公司



上海正牧建筑工程有限公司



上海正芯科融机器人科技有限公司

8 个专业化公司

8 Specialized Companies

5 个技术研发中心

5 Technology R&D Centers

7 个产品生产基地

7 Product Production Bases



猪场装备 Pig Farm Equipment	鸡场装备 Chicken Farm Equipment	饲料装备 Feed Equipment
正牧建筑 Zhengmu Construction Work	正芯机器人 Zhengxin Robot	正大谷瑞 CP GSI
新业务 New Business	海外集团内 Overseas CP Groups	海外东北亚 Overseas Northeast Asia
环模业务 Environmental Modeling Business	环保装备 Environmental Protection Equipment	海外东南亚 Overseas Southeast Asia
正福食品机械 CP-FUKUDA Food Mach	微波业务 Microwave Business	包装材料 Packaging
畜牧饲料运输车 Animal Feed Transport Vehicle	冷链运输车 Cold Chain Transport Vehicle	汽车租赁 Car Rental

90 名施工管理人员

90 Construction Management Personnel

135 名工程技术人员

135 Engineering and Technical Personnel



182项 专利 182 Patents

11项 软件著作权 11 Software Copyrights

参与编写行业标准 Setting Industry Standard



中国饲料工业协会

饲料机械标准化委员会

中国畜牧业协会工程分会

中国畜牧业协会物流分会

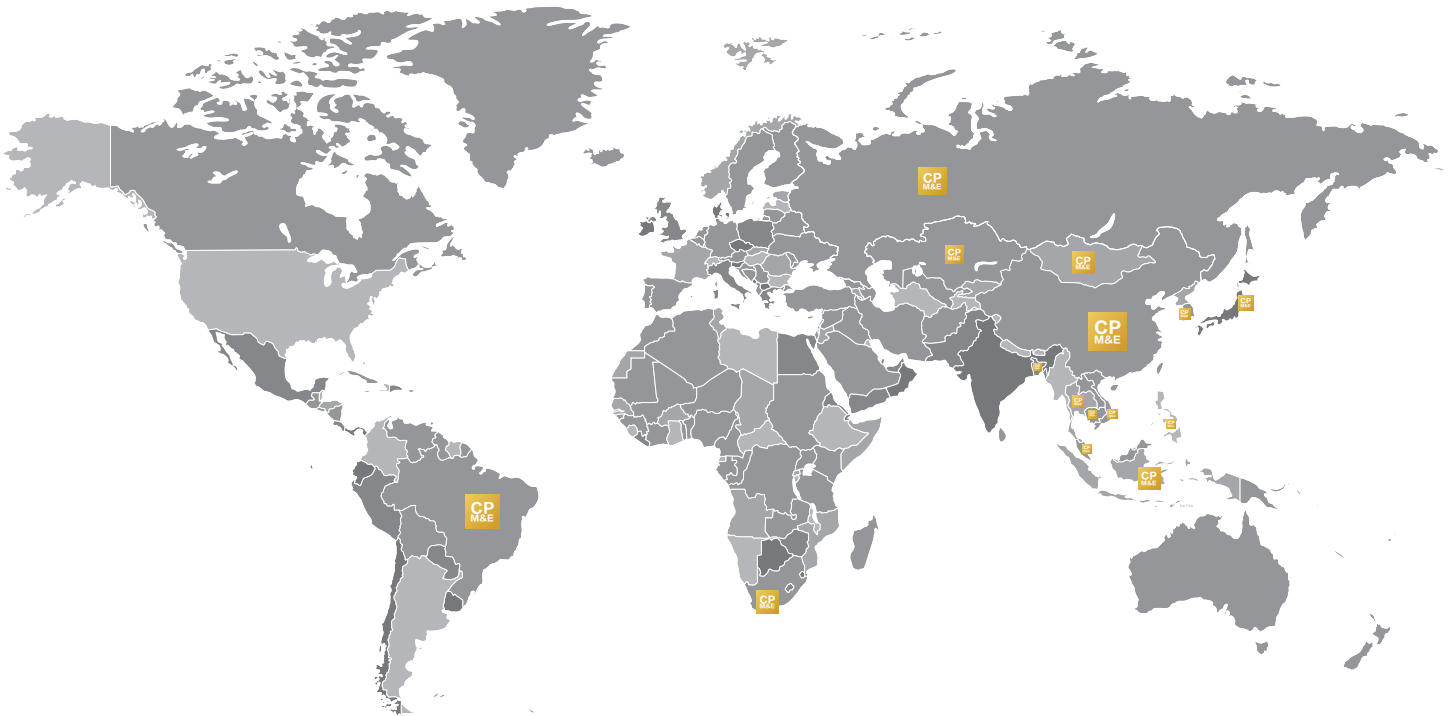
饲料畜牧技术与经济学会

中国林牧渔业经济学会饲料经济专业委员会

中国机电产品进出口商会



全球业务 Global Business



**正大机电全球销售服务点：
中国、泰国、印度尼西亚、马来西亚、菲律宾、越南、孟加拉国、
柬埔寨、日本、韩国、俄罗斯、哈萨克斯坦、蒙古国、南非、巴西**

Global Sales Service Office:
China, Thailand, Indonesia, Malaysia, Philippines, Vietnam, Bangladesh,
Cambodia, Japan, South Korea, Russia, Kazakhstan, Mongolia, South Africa, Brazil

合作客户

Cooperation and Service



种植场
Plantation



饲料厂
Feed factory



养殖场
Farm engineering



食品厂
Food factory



零售终端
Retail

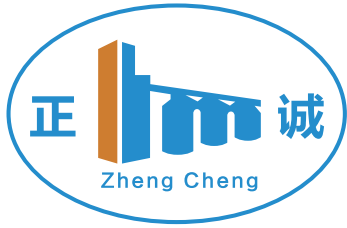


消费者
Consumers



Company

公司概况



饲料厂建设
Feed mill Turnkey Project



猪场建设
Swine farm Turnkey Project



鸡场建设
Chicken farm Turnkey Project



上海正诚机电制造有限公司成立于1994年，是泰国正大集团独资企业，专注于农牧食品业项目承揽和设备供应，是上海市高新技术企业。上海正诚是集整厂方案设计、生产工艺设计、建筑结构设计、土建施工、钢结构制造与安装、设备制造安装与调试、售后服务为一体的整体解决方案的提供者。

为了推动中国饲料厂、养殖场、食品厂产品质量的提高和生产效率的提升，我们依托正大集团全球视野的优势，不断引进国际前沿的理念、技术、工艺和设备，在自动化、智能化、可视化、可追溯化、生产安全、食品安全方面的经验积累，能够在满足业主个性化需求的同时，为业主创造价值。

- 占地面积**6000**平方米
- 建设了**150**多座饲料厂
- 建设了**300**多座畜禽养殖场
- 建设了**1000**万平米的钢结构厂房
- 专业技术研发人员**80**人



Shanghai Zhengcheng Mechanical & Electrical Manufacturing Co., Ltd. established in 1994, wholly-owned of C.P. GROUP. High-tech enterprise which focusing on EPC project contracting and equipment supply of feed, farm, and food industry. Shanghai Zhengcheng is the whole solution provider including plant design, production process design, architectural design, steel structure manufacturing and installation, equipment manufacturing installation and commissioning, civil construction, after-sale service.

In order to promote the improvement of the product quality and production efficiency of feed mills, farms and food factories, Shanghai Zhengcheng rely on the advantages of CP group's global vision and constantly introduce international cutting-edge concepts, technologies, processes and equipments. A wealth of experience in automation, intelligence, visualization, traceability, production safety, food safety can meet the personalized needs and create value for owners.

- **6,000** Square Meters
- **150** Feed Factory Projects
- **300** Farm Projects
- **10million** Square Meters of Steel Structure Plants
- R & D Staff **80**





猪场项目

Swine Farm Turnkey Project



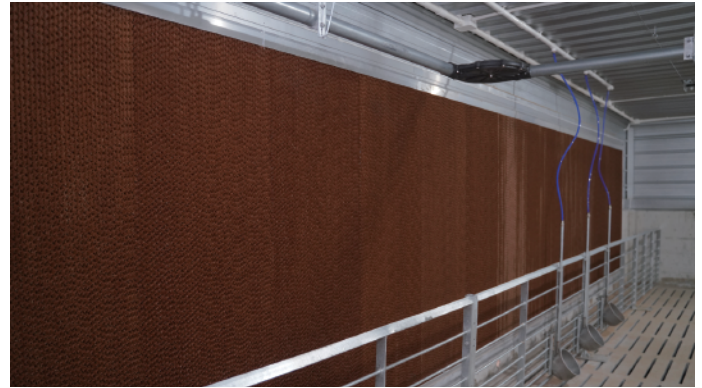
湛江割山14000育肥十场



阜新王府镇12000头育肥一场



民权2X3000头种猪场



上海正诚拥有全套猪场设备并提供EPC总承包服务，产品包括：按照产品排序，应该是栏位系统、水线系统、料线系统、通风环控系统、电气系统、排污系统。

Shanghai Zhengcheng supplies a complete set of swine farm equipment and provides EPC service.

Products include: sorted by product, which should be column system, water line system, material line system, ventilation and environmental control system, electrical system, and sewage system.



饲料厂项目 Feed Mill Turnkey Project



上海正诚可提供全套饲料厂设备并提供EPC总承包服务，产品包括：原料接收及存储系统、粉碎系统、配料混合系统、膨化烘干系统、制粒系统、油脂喷涂系统、成品系统、辅助系统以及配套的电控系统。

Shanghai Zhengcheng supplies a complete set of feed mill equipment and provides EPC service. Main products: raw material receiving and storage system, grinding system, blending system, expansion drying system, pelleting system, grease spraying system, bagging system, auxiliary system and electronic control system.



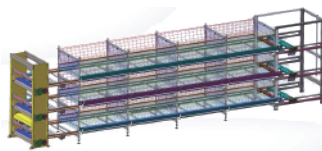
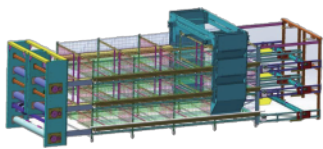
鸡场项目

Chicken Farm Turnkey Project



上海正诚拥有全套鸡场设备并提供EPC总承包服务，可提供鸡笼系统及工程、料线系统及工程、水线系统及工程、通风系统及工程、加湿系统及工程、供热系统及工程、照明系统及工程、出粪系统及工程、环控系统及工程、集蛋系统及工程、巡检系统及工程、电气系统及工程。

Shanghai Zhengcheng supplies a complete set of chicken farm equipment and provides EPC service. Main products: cage system, silo system, water line system, ventilation system, humidification system, heating system, lighting system, manure removal system, environment control system, egg collection system, inspection system, electrical system.

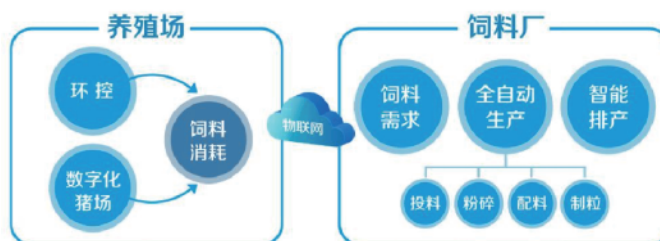
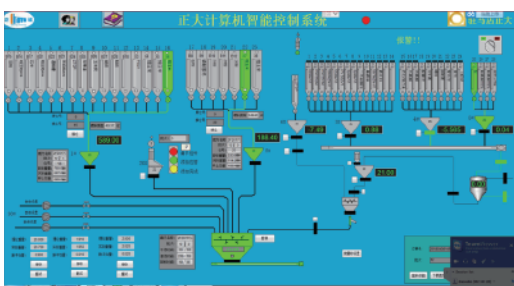


CPS系统 CP Smart System



上海正诚自主研发的饲料厂智能控制系统CP-SMART SYSTEM（简称CPS系统），可满足饲料厂自动化生产、减人增效、数据安全的目的，从硬件配置和软件架构设计上均采用先进的技术，保证了控制系统的先进性和可扩展性。

Shanghai Zhengcheng developed Feed Mill Intelligent Control System (CPS System), which can realize automatic production, increase efficiency and data security functions. Advanced technology is used in hardware configuration and software architecture to ensure the expansibility of CPS System.



数字化养殖系统 Digital Aquaculture System



上海正诚采用大数据、物联网、人工智能等先进技术，自主研发成功的数字化养殖系统，将养殖场装进了手机里、电脑里。该系统包括视频监控、环境监控、生物防疫、能源物资管理、猪只管理、人员管理六大功能，大幅提升养殖效率，让管理者在全球各地可以随时随地掌握养殖场的实际运营情况。

Based on Big Data, IOT, AI and other advanced technology, Shanghai Zhengcheng developed digital farming system that can running on mobile phone and computer. The system includes six functions: video monitoring, environmental monitoring, biological epidemic prevention, energy and material management, pig management and personnel management. This system significantly improves the efficiency of aquaculture, Managers can be kept abreast of the actual operation of farms anywhere.





由泰国正大集团和美国爱科集团共同投资成立的正大谷瑞机电有限公司，以爱科旗下养猪设备AP、肉鸡养殖设备CUMBERLAND、蛋鸡笼养设备TECNO、仓储设备GSI的产品技术为基础，不断革新和创新，为世界范围内的养殖企业量身定制畜牧养殖机械成套设备，并提供整体解决方案。公司产品涵盖种猪、育肥猪、蛋鸡、肉鸡养殖相关设备，主要包括喂料系统设备、环控系统设备、养猪栏体系统设备、蛋鸡养殖系统设备、种鸡平养系统设备等。公司坐落于慈溪国家级现代农业产业园内，占地200亩，于2020年8月正式落成，全面量产。正大谷瑞集成钣金、焊接、辊压成型、注塑、挤塑、智能装配六大核心工艺，配备有激光下料产线、焊接机器人产线、注塑挤塑产线、辊压成型产线等47台套，并针对产品特性开发了12条定制化智能装配线，确保产品加工及装配精度。利用德国SAP S/4HANA集成式智能 ERP 管理系统以及美国PTC公司下属CREO和WINDCHILL系列图形管理软件，通过数字化管理与柔性智能产线的有机融合，使得正大谷瑞成为全球规模大、产品品类全、加工设备及工艺先进，产品技术来源前沿的现代化养殖设备产业基地。为上海正诚EPC交钥匙工程提供品质优良、技术先进的配套产品。



蛋鸡养殖设备
Layer Cage Equipment



仓储设备
Storage Equipment



种鸡养殖设备
Broiler Cage Equipment



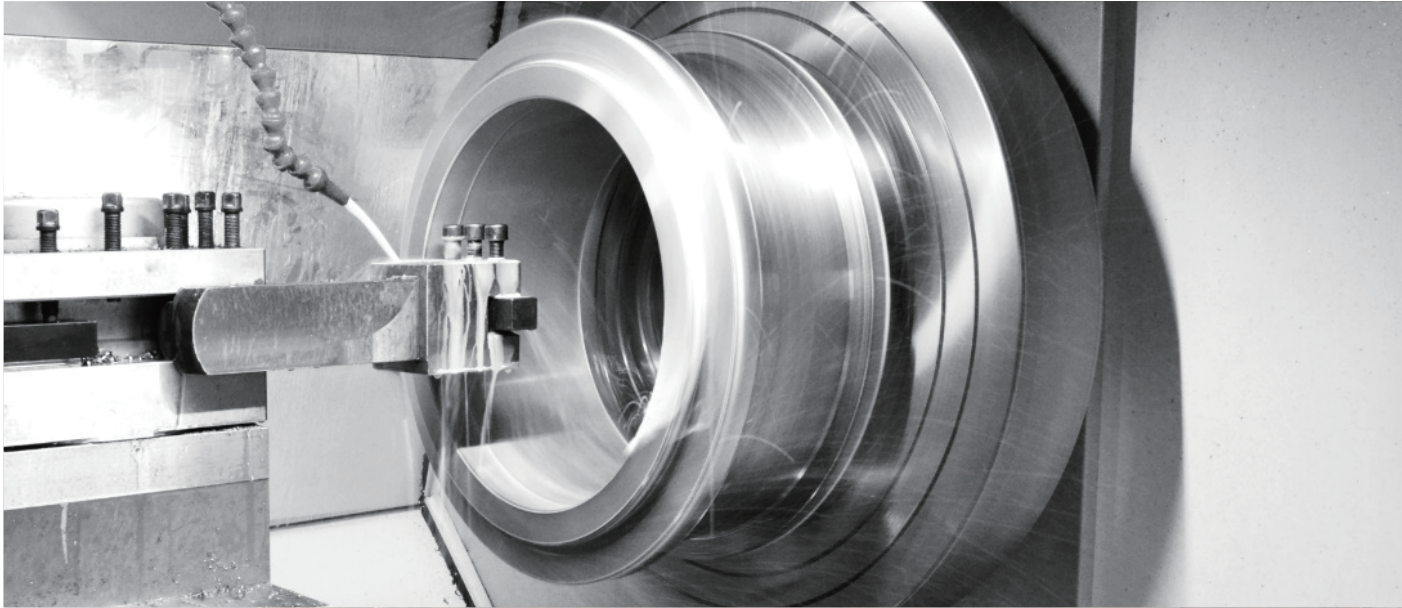
家畜养殖设备
Swine Equipment

Company

公司概况



CP-GSI is a joint venture between CP Group and AGCO Group. Integrating global technology of AP, Cumberland, TECNO, GSI, CP-GSI focus on the global pig, chicken, layer breeding enterprises tailored sophisticated, economic equipment and overall solutions. Main products includes pig, chicken feeding system equipments, environmental control system equipments, pig penning system, modern poultry farm cages, modern flat breeding chicken equipments. CP-GSI is located in Cixi national modern agricultural industrial park, covering an area of 200 acres, was officially completed in August 2020. CP-GSI integrates six core processes of sheet metal, welding, roll forming, injection molding, extrusion and intelligent assembly, with laser blanking line, welding robot line, injection molding line, roll forming line, and developed 12 custom intelligent assembly lines to ensure the accuracy of product processing and assembly. Using the integrated intelligent ERP system of SAP S/4HANA and the graphic management software of CREO and Windchill, combining digital management and flexible intelligent product lines, CP-GSI become a modern breeding equipment industrial base with global scale, complete product category, advanced processing equipment and technology, and advanced product technology source. CP-GSI is a breeding equipment base and providing high quality and advanced technology products for Shanghai Zhengcheng EPC projects.



公司概况 Company



上海正宜机器工程技术制造有限公司成立于1997年，是以饲料工业为主体的饲料机械加工设备及配件制造商、饲料厂环保方案及相关环保设备的提供者、微波食品设备的研发制造者。上海正宜在海内外设立多家服务网点及办事机构，较早的取得了ISO9000认证，拥有多项发明专利，是上海市高新技术企业。上海正宜在产品研发上不断创新与发展，自主研发了全自动智能环模修复机、粉碎机、智能藻类输送系统、微波光氧除臭设备、污水处理设备、微波食品设备等。从1999年至今，上海正宜已为行业众多综合性集团客户提供过产品及服务，包括饲料机械成套设备及配件、饲料厂环保除臭项目、污水处理工程项目、微波食品工程项目等。

上海正宜的环模产品覆盖近200种规格型号,拥有超过42000个实际环模设计生产经验，涉及畜禽料、牛羊料、水产料、生物质木屑料等原料制粒工艺，在国内及东南亚市场享有较高的知名度和良好的声誉。

公司始终坚持“四个零”的质量方针，即“材料零缺陷、设计零缺陷、加工零缺陷、工序零漏检”。并以客户为中心，竭诚为客户提供优质的产品和服务。在未来的发展中，上海正宜将始终秉持“技术是核心、质量是生命”的价值观，在产品研发不断创新，为客户创造价值，为中国乃至世界的饲料及食品工业的发展作出贡献。



Shanghai Zhengyi Machinery Co, Ltd, established in 1997, is a professional manufacturer of feed machinery processing equipment and accessories for feed industry, a provider of environmental protection solutions and related environmental protection equipment for feed factories, and a Researcher & manufacturer of microwave food equipment, Zhengyi is a high-tech enterprise in Shanghai, who has multiple service outlets and offices both domestically and internationally. We have obtained ISO9000 certification earlier and has many invention patents. Zhengyi continuously innovates and develops in products' research and development, and independently develops multi-function CNC ring die repairing machine, hammer grinder, intelligent algae breeding and transportation system, microwave photo oxygen deodorization equipment, sewage treatment equipment and microwave food equipment. Since 1999, Zhengyi has provided products and services for other group customers, including feed machinery equipment and accessories, feed factory environmental protection deodorization projects, sewage treatment projects, microwave food projects.

Zhengyi's ring die products cover nearly 200 models with different sizes. It has done the design and production of practical dies for more than 42000 times, involving all kinds of raw material granulation processes such as livestock and poultry feed, cattle and sheepfeed, aquatic feed, and biomass wood chips.

The company always adheres to the quality policy of "four zeros": zero defects in materials, design, processing and inspection. Customer oriented, try best to produce high quality products for customers and provide the best service. Zhengyi will always adhere to the value of "technology is the core, quality is the life", constantly innovate in product research and development, create value for customers, and contribute to the development of feed and food industry in China and even the world.

饲料机械 Feed Machinery



环模
Ring Die



压辊总成
Roller Assemble



锤片式粉碎机
Grinder



SFSP系列水滴形粉碎机
SFSP Tear Circletype Hammer Mill



SWFP宽式微粉碎机
SWFP Wide Type Grinder



SWFL系列立式超微粉碎机
SWFL Pulverizer



SKLN系列逆流式冷却器
SKLN Series Counter-flowtype



SKLB系列摆式冷却器
SKLB Series Pendulum Cooler



SKIY系列叶轮式冷却器
SKIY Series Impeller Type Cooler



HHJD系列单轴混合机
HHJD Single Shaft Mixer



HHJS系列双轴混合机
HHJS Double Shaft Mixer



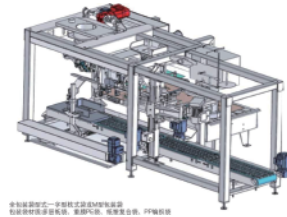
SWDG系列隔套稳定器
SWDG Diaphragm Stabilizer



自动拆包机组
Automatic Unpacking Machine



自动上袋机组
Automatic Bag-loading System



全自动包装机组
Automatic Packaging Machine



SFJZ系列振动分级筛
SFJZ Series Vibration Sieve



SFJH系列回转分级筛
SFJH Series Rotary Sifter



STFZ系列投料口振动筛
STFZ Series Intake Vibration Screen



SQLY系列粒料清理筛
SQLY Series Pellet Cleaning Sieve



SQLT系列粉料清理筛
SQLT Series Powder Cleaning Sieve



SQLB系列粉料保险筛
SQLB Series Centrifugal Sieve



STZJ系列调质器
STZJ Series Contioner



STZG系列夹套调质器
STZG Jacket Conditioner



STZR系列热甲保质器
STZR Series Heat Retaintioner

饲料机械 Feed Machinery



双螺杆膨化机
Twin Screw Extruder



全自动微量物质配料秤
Micro-scale Material And Ingredients



TFPX系列旋转分配器
TFPX Series Rotary Distributor



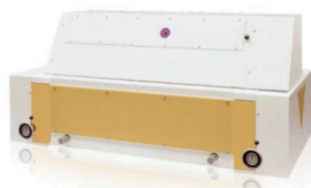
TCXT系列永磁筒
TXCT Series Magnettube



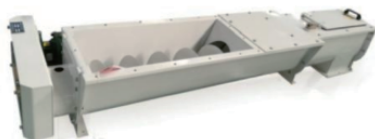
TZMQ/TZMD系列气动闸门
TZMQ/TZMD Series Pneumatic Slide Gate



TDTG系列斗式提升机
TDTG Series Bucket Elevator



DFZL系列破碎机
DFZL Serie Crusher



TLSU系列槽形螺旋输送机
TLSU Series Trough Screw Conveyor



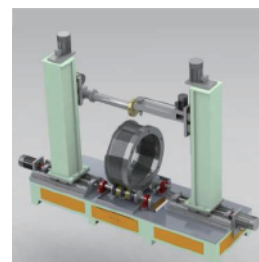
TLSG系列管形螺旋输送机
TLSG Screw Conveyor(Tubular)



SYTV系列油脂添加机
SYTV Liquid Adding Machine



SYTC系列称重式液体添加机
SYTC Series Weighing Type Liquid Adding Machine



环模智能修复机
Multi-function Cnc Ring Die Repair Machine

环保设备及工程

Green Facilities Equipment and Engineering



脉冲除尘系统
Pulse Dust Removal System



旋流板式喷淋塔
Rotary Plate Spray Tower



微波光氧除臭设备
Pulse Dust Removal System



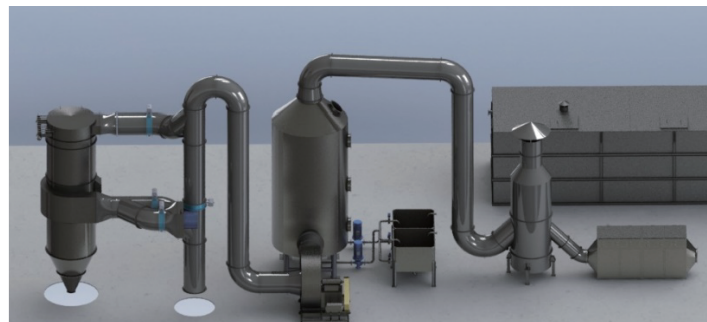
循环喷淋系统
The Circulating Spray System



微波光氧系统
Microwave Photooxygen System



一体化水处理设备
Integrated Water Treatment Equipment



环保除臭系统
Environmental Deodorization System

虾场装备及水处理设备

Shrimp Farm Equipment and Water Treatment Equipment



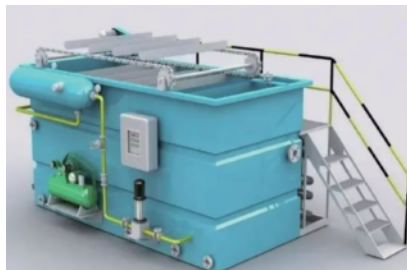
RO成套装备
Ro Complete Equipment



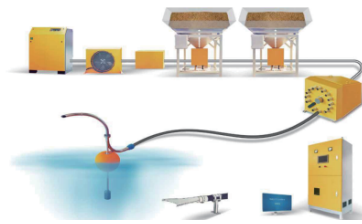
曝气生物滤池
Aerated Biological Filter



高效厌氧反应器
High-rate Anaerobic Reactor



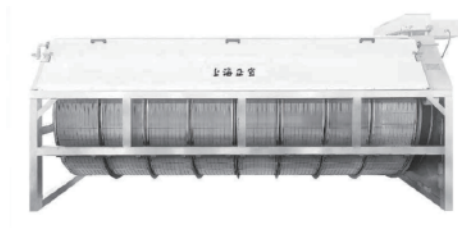
一体化气浮机
Integrated Air Flotation Machine



智能化气力投喂系统
Pneumatic Feeding System



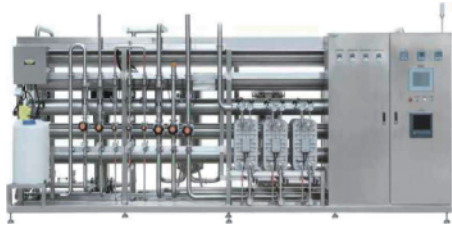
智能化履带式微滤机
Smart Beltty Pefilter



智能化转鼓式微滤机
Smart Rotary Drumfilter



蛋白质分离器
Protein Skimmer



超纯水设备
Ultra-pure Water Equipment



软化水系统
Softening Water System



超滤系统
Ultrafiltration System



高效沉淀池
High Efficiency Sedimentation Tank



二氧化氯发生器
Chlorine Dioxide Generator



多介质过滤器
Multi Media Filter



臭氧发生器
Ozone Generator

Company

公司概况



鑫百勤专用车辆有限公司（以下简称鑫百勤）是一家专业致力于设计、研发和生产散装饲料运输车、散装饲料罐、畜禽运输车、冷藏车的高新技术企业，也是集产品研发、工程设计、生产制造、销售安装为一体的新型企业。在2008年成立于上海，2015年由正大集团收购，正式并入世界上最大的华人跨国公司之一的正大集团旗下。

公司位于长三角经济区，慈溪国家现代农业产业园内，总投资将近2个亿，占地面积100亩，员工人数350人，高级技术人员30人，年产量2000辆。核心产品有散装饲料运输（半挂）车、智能环保畜禽（半挂）车、智能环保雏禽运输车、多功能食品冷餐运输车、农业机械和环保车辆。

公司与中国畜牧业龙头企业如正大集团、牧原集团、新希望、正邦集团、双胞胎、中粮集团等国家农牧业大型集团企业保持着长期稳定的合作，并与海外诸多知名企业如马来西亚 GSI、越南 DABACO 集团建立了良好的战略合作关系，在东南亚享有较高知名度。



XinBaiQin Special Vehicle Co.,Ltd. (hereinafter referred to as XinBaiQin) is a high-tech enterprise, specializing in the R&D and production of bulk feed transport truck, bulk feed tank, poultry and livestock transport truck, and refrigerated transport truck, as well as a new enterprise integrating product R&D, engineering design, production, manufacturing, sales and installation. Founded in Shanghai in 2008, it was acquired by Charoen Pokphand Group in 2015, officially merged into this Group, one of the largest multinational Chinese companies in the world.

The company is located in National Modern Agricultural Industrial Park, Cixi city, the Yangtze River Delta Economic Zone, with a total investment of nearly 200 million, an occupied area of 100 mu, 350 employees and 30 senior technicians, and an annual output of 2,000 vehicles. Its core products cover semi-trailer, poultry and livestock transport truck and refrigerated transport truck.

The company has maintained a long-term and stable cooperation relationship with China's leading animal husbandry enterprises such as CP Group, Mu Yuan Group, New Hope, ZhengBang Group, Twins, and COFCO Group, as well as a good strategic cooperation relationship with many overseas well-known enterprises such as Malaysia's GSI and Vietnam's Dacoit Group. In short, it has enjoyed a high reputation in Southeast Asia.

引领行业发展 创造客户价值



产品列表 Product List

散装饲料运输车（电动绞龙） Bulk Feed Transport Truck(Electric Auger)



散装饲料运输车（电动绞龙）是国内率先使用减速机无线遥控技术，可单人完成操作的一款饲料运输车，采用ABB电机IP55级防护、施耐德电气元件，欠压等电控连锁保护；永磁发电机节能降噪，省电效率高，可长期免维护使用；使用国企优质钢材罐体，提高充满系数，罐体采用一次性成型技术，强化焊接，保证罐体强度，罐体外部一道喷砂、二道打磨、三道油漆三道极致工艺抗腐耐久；绞龙托架采取安全报警模式，避免危险发生；使用特种轴承，使得车辆寿命提升，免维护，安全省事。

Electric Auger Bulk Feed Transport Truck is the domestic first to apply wireless remote control technology of the reducer, operated by a single person. It adopts ABB motor IP55 protection, Schneider electrical components, under voltage and other electronic interlocking protection; it is with permanent magnet generator energy, which conserves energy and reduces noise, saves power and improves efficiency, and is with long-term free maintenance; it is with the state-owned high-quality steel inverted cone tank for the higher filling coefficient. And the tank adopts one-time molding technology, strengthening welding and ensuring its strength, and its exterior goes through 3 processes of extreme corrosion resistance and durability: first sandblasting, second polishing, and third paint spraying; the auger bracket adopts the safety alarm mode to avoid danger, it is with special bearings for the longer vehicle life and free maintenance, which is safe and easy.

散装饲料半挂车（电动绞龙） Bulk Feed Transport Semi-trailer (Electric Auger)

采用ABB电机IP55级防护、施耐德电气元件，欠压等电控连锁保护；永磁发电机节能降噪，省电效率高，可长期免维护使用；使用国企优质钢材倒锥罐体，提高充满系数，罐体采用一次性成型技术，强化焊接，保证罐体强度，罐体外部一道喷砂、二道打磨、三道油漆三道极致工艺抗腐耐久；使用特种轴承，使得车辆寿命提升，免维护，安全省事。



Electric Auger conveyor bulk feed transport semi-trailer adopts ABB motor IP55 protection, Schneider electrical components, under voltage and other electronic interlocking protection; it is with permanent magnet generator energy, which conserves energy and reduces noise, saves power and improves efficiency, and is with long-term free maintenance; it is with the state-owned high-quality steel inverted cone tank for the higher filling coefficient. And the tank adopts one-time molding technology, strengthening welding and ensuring its strength, and its exterior goes through 3 processes of extreme corrosion resistance and durability: first sandblasting, second polishing, and third paint spraying; it is with special bearings for the longer vehicle life and free maintenance, which is safe and easy.

散装饲料运输车（气力输送）

Bulk Feed Transport Truck (Pneumatic Conveying)



新款智能气卸式散装饲料运输车，行业领先。通过CG模拟，大数据测试，使得结构更合理，效率更高；4kW光纤激光工艺，数控折弯，机器人焊接，精密加工；高配底盘，性能稳定，操控便捷，驾驶舒适；使用大型国企优质钢材，韧性与延展性好，品质连续有保障，罐体充满系数高；罐体外部一道喷砂、二道打磨、三道油漆三道极致工艺抗腐耐久；使用先进无油空压机，低压力，出风量大，抗污、耐久，控制方便。

新款智能气卸式散装饲料运输车输送距离远、饲料破碎率低、无分层、无残留，结构简单，易于操作、故障率低，易维修，采用先进无油空压机，出风量大，输送快，抗污能力强。

The new intelligent pneumatic conveying bulk feed truck is first made in China, leading the industry. After receiving CG simulation and big data test, it has more reasonable structure and higher efficiency; it is equipped with 4,000K Woptical fiber laser technology, numerical control bending, robot welding, precision processing; it is also with high configuration chassis, stable performance, convenient control, comfortable driving; it is with WISCO / Shasteel hot rolling steel body, good toughness and ductility, continuous quality guarantee; it is with large state-owned high-quality steel cone tank for the higher filling coefficient; it is with the tank, whose exterior goes through 3 processes of extreme corrosion resistance and durability: first sandblasting, second polishing, and third paint spraying; it is with advanced oil-less air compressor, equipped with large air output, anti pollution, and durability, and easy to control.

The new intelligent pneumatic conveying bulk feed transport truck has the advantages of long conveying distance, low feed crushing rate, no stratification, no residue, simple structure, easy operation, low failure rate, easy maintenance, advanced oil-less air compressor, large air output, fast transportation, strong anti pollution ability, and in-built weight unloading system, which can accurately control the unloaded weight.

散装饲料半挂车（气力输送）

Bulk Feed Transport Semi-trailer (Pneumatic Conveying)

使用大型国企优质钢材圆罐罐体，提高充满系数；罐体外部一道喷砂、二道打磨、三道油漆，三道极致工艺抗腐耐久。

气卸式散装饲料运输半挂车输送距离远、饲料破碎率低、无分层、无残留，结构简单，易于操作、故障率低，易维修，采用先进无油空压机，出风量大，输送快，抗污能力强。



It is with the state-owned high-quality steel inverted cone tank for the higher filling coefficient; the exterior of tank goes through 3 processes of extreme corrosion resistance and durability; first sandblasting, second polishing, and third paint spraying.

The pneumatic conveying bulk feed transport semi-trailer is featured with long conveying distance, low feed crushing rate, no stratification, no residue, simple structure, easy operation, low failure rate, and easy maintenance; large air output, fast transportation and strong anti pollution ability with the adoption of advanced oil-less air compressor.



畜禽运输车 Poultry and Livestock Transport Truck



畜（雏）禽运输车，引进国外专用车辆技术开发，并逐年升级适合中国养殖特色的细节是满足国家农业部79号文件全部要求的运猪车。

车辆采用全铝合金封闭结构，车身自重轻，装载量高；有自动升降的顶部和垂直升降平台，伞顶开启会自动报警；同时配备全程主导安全服务；车厢内配备温度及视频监控、夜间照明、空调、自动饮水系统、喷淋降温系统、自动空气过滤系统以及保温系统，完全满足国家农业农村部第79号文件的防疫要求，安全准确的完成畜禽运输任务。

Poultry and livestock transport truck is applied to transport pigs. It is developed based on the foreign special purpose vehicle technology, and upgraded year by year in order to be consistent with the details of China's breeding characteristics and meet all the requirements of the Ministry of Agriculture No. 79 announcement.

The transport adopts the structure fully closed with aluminum alloy, with light body weight and highloading capacity; It has an automatic lifting roof and vertical lifting platform. When the canopy is opened, it will automatically alarm; it is also equipped with the leading safety service in the whole process; the transport body is equipped with temperature video monitoring, night lighting, air conditioning, automatic drinking water system, spray cooling system, automatic air filtration system and insulation system, which full meet the epidemic prevention requirements of No. 79 announcement of China's Ministry of Agriculture and Rural Affairs areas, and safely and accurately complete the task of poultry transportation.

果蔬自动拣选运输车 Auto-picking truck



由北汽集团生产的大功率欧马可底盘、鑫百勤高端全封闭聚氨酯板块拼装保温厢、开利公司陆上运输冷暖机组、自主研发自动控制拣选移动装卸系统、凯卓立公司滚筒式升降尾板等系统组成，可实现厢内温度恒温设定，运输货物装卸自如，一名司机就可以轻松的完成运输、超配、拣选、卸货的果蔬配货工作。

With the high-power Aumark chassis produced by Baic Group, removable insulated compartments produced with Xinbaiken high-end fully enclosed polyurethane plate, land-carriage heating and cooling unit from Carrier, self-developed auto-picking mobile handling system, drum-type lifting tail plate from Cadro Company, it can maintain constant temperature in the compartment, and the transport goods with free handling. A driver can easily complete the fruit and vegetable distribution work of transportation, distribution, picking, and unloading.

种蛋雏苗车 Breeding Eggs and Baby Chick Truck



- 制冷装置，两套设计，互为备份。一套为独立前置式S1250制冷系统，一套为底置式C700制冷系统；
- 加热装置，三套加热，一套为燃油加热系统散热量、一套为独立机组加热装置、一套为底置式机组加热；
- 通风装置及检测：安装10组原装进口变频直流风机、安装回风过滤装置、装二氧化碳检测装置、安装无线温度监控装置；
- 厢内固定消毒照明配置：安装紫外线消毒灯2个，照明灯2个；
- 设计运输时舱内温度：20℃-26℃，二氧化碳设定 \geq 3000mp。
- Refrigeration device, two sets of design, backup each other: an independent front mounted S1250 refrigeration system and a bottom mounted C700 refrigeration system;
- 3 sets of heating devices: a heat dissipation of fuel heating system, an independent unit heating device, and a bottom mounted unit heating;
- Ventilation device and detection: install 10 sets of original imported frequency conversion DC fans, return air filter device, carbon dioxide detection device and wireless temperature monitoring device;
- Fixed and disinfected lighting configuration in the vehicle: install 2 ultraviolet disinfection lamps and 2 lighting lamps;
- The designed compartment temperature in transport: 20℃-26℃, the carbon dioxide \geq 3000mp.

畜禽运输半挂车 Livestock and Poultry Transport Semi-trailer



畜禽运输半挂车，引进荷兰BERDEX专用车辆技术开发，并逐年升级适合中国养殖特色的细节，满足国家农业部79号文件全部要求的运猪车。

底架采用Q345热镀锌，箱体为全铝合金型材，顶板自由升降，空气悬挂，铝合金钢圈；车厢内配备夜间照明、自动饮水、喷淋降温系统，满足国家农业农村部第79号文件。

The semi-trailer for livestock (young) and poultry transportation is developed with the introduction of Dutch BERDEX special vehicle technology, and is upgraded year by year to fit the details of Chinese breeding industry. It is the only pig transport truck in China that meets all the requirements of the Ministry of Agriculture No. 79 document.

The bottom frame is made of Q345 hot-dip galvanized, the bodywork is made of all aluminum alloy profiles, the top plate is freely lifted, air suspended, and aluminum alloy steel rims; the compartment is equipped with night lighting, automatic drinking water, and spray cooling system, which meets the requirements of the Ministry of Agriculture and Rural Affairs No. 79 file.



高端冷链运输 Cold-chain Transportation

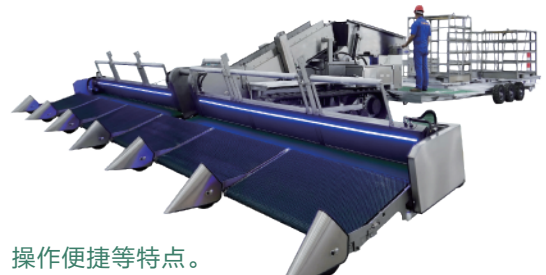
- 高强度箱体，确保运输质量
- 底部波纹面城墙式通风道轨，保证厢内温度
- 后门采用多齿三元乙丙密封条，密封效果好
- 五金采用304镜面不锈钢材质，寿命长
- 选装推拉步梯，方便人员出入及装卸
- 可翻转铝合金侧护及一体铝合金挡泥瓦



- High strength compartment ensures transportation quality.
- Ventilation track in a corrugated wall type at the bottom ensures the temperature inside the vehicle.
- The rear door adopts multi tooth EPDM sealing strip with good sealing effect.
- The hardware is made of 304 mirror stainless steel with long service life.
- Push-and-pull step ladder is installed to facilitate personnel access and loading and unloading.
- Overturnable aluminum alloy side guard and integral aluminum alloy mudguard.

智能化坪养抓鸡车 Chicken Harvester

- 节能、高效、使用成本低、鸡只损伤率低。
- 笼筐转换车采用免修实心轮胎，工作稳定。
- 全车开合、集中、提升、装笼均用液压马达完成。
- 先进的电控液压系统充分发挥了自动行走、履带逆转、输送高效、操作便捷等特点。
- 加宽的橡胶履带和加高分子支重轮使设备具有行走无音、不损伤路面、稳定性强等特点。
- 动力采用常柴4100、新柴490柴油、久保2403发动机（三款机型可根据用户需求选装）。
- 整体车架采用45# 碳钢，经过热镀锌处理，上装部分全部采用304# 不锈钢结构，具有防腐好、强度高等优点。
- 电控部分采用德国进口原件PLC智能程序，具备触摸式电容显示屏，工作参数根据工作需要随时输入设定。



- Energy-saving, high efficiency, low cost, low damage rate of chicken.
- Users can freely choose engine from Changchai 4100, Xinchai diesel 490 and Kubota 2403.
- The cage-to-basket conversion vehicle adopts repair-free solid tires to guarantee stable operation.
- The overall frame is made of 45# carbon steel being hot-dip galvanized, and the upper part is all made of 304# stainless steel structure enjoying good corrosion resistance and high strength.
- The widened rubber track and polymer support wheels enable it to be silent in walking, no damage to the road, and strongly stable.
- The opening and closing, centralization, lifting, and cage installation of the entire vehicle are all completed by hydraulic motors.
- The advanced electronically controlled hydraulic system fully achieves automatic walking, track reversal, efficient conveying, and convenient operation.
- The electronic control part adopts the original imported from Germany PLC intelligent program with touch-type capacitive display and in which working parameters can be input and set at any time according to work needs.

液态有机肥撒施机 Liquid Organic Fertilizer Spreading Truck



液态有机肥撒施机用来解决养猪场粪肥沼液处理的难题，符合国家农牧结合的政策，养护土地，环保排污。

均匀施肥，养护土地，开沟、施肥、覆土作业一体化进行，液压制动同时可选装空气制动，适配不同制动形式的拖拉机。

The liquid organic fertilizer spreading truck can be used to solve the problem of manure and digested effluent treatment in pig farms. It provides an environmentally friendly solution to the waste treatment and land conservation in line with the national policy of agro-animal husbandry.

It has the advantages of application of fertilizer uniformly over the field, conservation of the land and integrated operations of ditching, fertilizing and soil covering. With the installation of hydraulic brake and optional installation of air brake, it is suitable for tractors with different braking forms.

密闭式好氧发酵罐 Closed Aerobic Fermentation Tank

好氧发酵是在发酵罐内部输送空气和进行搅拌，在氧气充足的条件下，通过好氧菌的作用，分解家畜粪便、淤泥、厨余垃圾等有机废弃物，利用有机废弃物的分解热蒸发掉废弃物中的水分，使有机废弃物变为优质有机肥。

发酵罐特点：具有设备体积小、密封式处理，无污染、保温好、不受季节寒冷所限、三层结构、操作管理简单、耗能低。

Aerobic fermentation is the process of transporting air and stirring inside, decomposing organic waste such as manure, sludge and kitchen waste via aerobic bacteria under the condition of sufficient oxygen. And then the heat produced in the decomposing process is used to evaporate the water in the waste, so that the organic waste becomes high-quality organic fertilizer.

Features of the fermentation tank: small in size, closed process thus no pollution and helpful to preserve heat, not limited by seasonal factors like freezing conditions, three-layer structure, easy operation and management, and low power consumption.



Company

公司概况

正大汽车租赁有限公司成立于2021年，总部位于上海，近20家分公司分布于中国各省市自治区。公司致力于提升正大集团中国区各公司的出行服务及形象，以及高效利用资产的金融效益和车辆运营过程中车联网的数智化效益，并推动新技术在农牧食品及零售行业的快速应用。

C.P. Vehicle leasing Co., Ltd established in 2021 in Shanghai, and nearly 20 branches are located in most of the provinces. It focuses on improving the travel service of CP group (China), efficiently utilizing the financial benefits of assets and the digital intelligence benefits of vehicle networking, and promoting the rapid application of new technologies in Agro-industry and retail industry.

- 乘用车的长租业务
- 农牧物流车辆的长租业务
- 城市配送类车辆的长租业务
- 其他特殊设备的长租业务

- Long-term rental of passenger vehicles
- Long-term rental of Agro-industry and Food vehicles
- Long-term rental of Urban delivery vehicles
- Long-term rental of other special vehicles



总部-上海 分公司

浙江、安徽、湖北
江西、辽宁、广西
云南、广东、四川
陕西、河南、内蒙古
湖南、贵州、新疆
海南、河北、山东
甘肃、重庆、山西

主营业务

Main Business

乘用车的长租业务

Long-term Rental of Passenger Vehicles



农牧物流车辆的长租业务

Long-term Rental of Agro-industry and Foodv Vehicles



散装饲料运输车
Bulk Feed Transport Truck



环保智能畜禽运输车
Poultry and Livestock
Transport Truck



种蛋运输车
Breeding Eggs Transport Truck

城市配送类车辆的长租业务

Long-term Rental of Urban Delivery Vehicles



冷链运输车
Cold-chain Transportation



新能源城配车
New Energy City Delivery Vehicle



皮卡
Pickup Truck

其他特殊设备的长租业务

Long-term Rental of Other Special Vehicles



叉车
Fork Truck



AGV



无人机
UAV



正福食品机械
CP-FUKUDA FOOD MACH

食品工程整体解决方案的供应者

Company

公司概况

上海正福食品机械工程有限公司成立于2019年，由上海正诚机电制造有限公司与日本株式会社福田FUKUDA合资，位于上海市松江区。正福是一家专业从事食品机械研制、开发、生产、集料、工贸为一体的企业。凭着对先进技术的不断探索、研究和应用，公司发展已初具规模，并拥有先进的生产设备、丰富的制造经验、高素质的科研人才和专业的售后服务队伍。公司产品已广泛应用于各个领域，遍及全国，并远销海外国家和地区。主要产品有：全自动炒锅、高周波解冻机、全自动灌装机、和面机、轧面机、拌馅机、气调包装设备等各领域食品机械。我们始终秉持以优质的产品、优惠的价格和良好的售后服务，来赢得每一位客户的信赖。

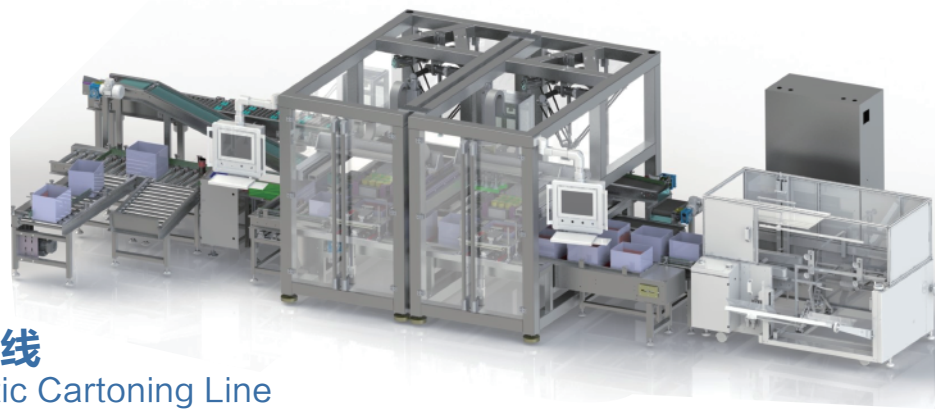
Shanghai Zhengfu Food Processing Machinery Engineering Co., Ltd. was established in 2019 as a joint venture between Shanghai Zhengcheng Mechanical and Electrical Manufacturing Co., Ltd. and FUKUDA Co., Ltd., located in Songjiang District, Shanghai. Zhengfu is an enterprise specializing in the research, development, production, aggregate, industry and trade of food machinery. With the continuous exploration, research and application of advanced technology, the company's development has begun to take shape, and has advanced production equipment, rich manufacturing experience, high-quality scientific research personnel and professional after-sales service team. The company's products have been widely used in various fields, all over the country, and exported to overseas countries and regions. The main products are: automatic frying pan, high-frequency thawing machine, automatic filling machine, kneading machine, noodle rolling machine, stuffing mixing machine, modified atmosphere packaging equipment and other food machinery in various fields. We always uphold the high-quality products, preferential prices and good after-sales service to win the trust of every customer.

产品列表
Product List

全自动米饭生产线
Fully Automatic Rice Production Line



全自动装箱线
Fully Automatic Cartoning Line



全自动包子生产线
Fully Automatic Bun Production Line

真空搅拌机

Vacuum Mixer

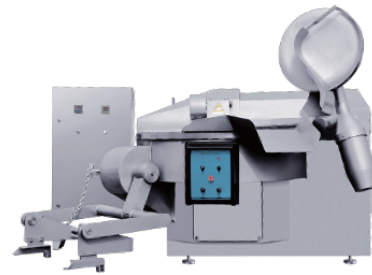
- 整机采用不锈钢材料制作，坚固耐用、易于清洗。
- 可设定真空度，真空效果好，可使物料在真空状态下搅拌。
- 采用平行双轴螺旋结构，装有斜板桨叶及螺旋推进搅拌圈，搅拌均匀。
- The mixer is made of quality stainless steel, solid, durable and hygienic.
- Materials are mixed with high performance vacuum system; and vacuum can be set up.
- The parallel twin shafts equipped with palm-vane and pushing-ring make a uniform mixing result.



真空斩拌机

Vacuum Bowl Cutter

- 整机采用优质不锈钢材料制作，坚固耐用、易于清洗。
- 采用最佳的可编程控制器和触摸屏，实现先进的操作控制。
- 温度、时间、转数可显示并设定，可控制最佳斩拌时间。
- High-quality Stainless Steel, solid, durable and hygienic.
- Advanced PLC &HMI (Human-Machine Interface) control system.
- Temperature, Time and Bowl revolution can be displayed and controlled. It ensures the best chopping time control.



冻、鲜肉绞肉机

Grinder for Frozen/Fresh Meat

绞肉机依靠螺杆旋转将料斗箱中的原料肉推到预切板处，通过螺杆的旋转作用，使得绞刀与孔板产生相对运动，从而将原料肉切成颗粒形状，确保了肉馅的均匀性。

Materials in the hopper are pushed to pre-cut-plate by the rotation of screw. The meat is cut to uniform particles through the relative movement between knife and hole-plate caused by rotary screw.



烟熏炉

Cooking & Smoking House

- 具有蒸煮、梯度蒸煮、干燥、烘烤、烟熏、加湿烟熏、排风、清洗等功能。
- 配置发烟系统，着色均匀、色泽好。可监控烟雾温度。
- 采用可编程控制器和大视窗触摸屏控制，生动直观地显示设备运行状态，可显示并控制温度、湿度、时间等工艺参数，并可在生产过程中随时调节参数。可进行单工艺操作，也可将九个以下的单工艺任意组合成配方进行生产，可存储 100 套不同配方。
- Various applications of Cooking, Gradient-cooking, Drying, Baking, Hot smoking, Moist smoking, Exhausting and Cleaning.
- Mount with smoking generators with uniform and perfect coloring. Temperature of smoke is monitored.
- Jixiang PLC&HMI control system shows you a graphic actual processing situation. The parameters, such as temperature, humidity, time and etc. can not only be preset but adjusted during processing. You can select the individual processing step, or you can also create a program by these nine steps. Up to 100 `different programs can be created and stored.



真空滚揉机

Vacuum Tumbler

本机采用不锈钢制作，结构合理、运行平稳、噪音小、性能可靠、操作简便、设备使用效率高。

This tumbler is made of quality stainless steel; reasonable structure, continuous running, low noises, reliable performance, easy operation and high efficiency.



盐水注射机

Brine Injector

- 注射率可以任意设定调整。
- 步进及针头运动由变频器调节速度快慢。
- 特殊的注射针头，便于清洗。
- 盐水槽：选择滚筒过滤、盐水搅拌、制冷冷却装置。
- Injection rate can be set as desired.
- Stepping and needle box movement is adjusted by the frequency convertor.
- Special injection needle is easy cleaned.
- Brine tank: choose drum filter, brine stirring, refrigeration and cooling device.



Company

公司概况

上海正牧

上海正牧建筑工程有限公司作为肉类食品全产业链基础设施建设的优质承包商，近三年公司团队完成六十多个养殖项目，包括猪场、虾场、鸡场、食品厂、饲料厂等EPC及基础设施建设，并持续拓展承揽其他领域项目，包括屠宰场等业务。

Shanghai Zhengmu Construction Engineering Co., Ltd. As a high-quality contractor for the infrastructure construction of the entire meat food industry chain, the company's team has completed more than 60 breeding projects in the past three years, including EPC and infrastructure construction of pig farms, shrimp farms, chicken farms, food factories, feed factories, etc., and continues to expand and contract projects in other fields, including slaughterhouses and other businesses.

整体解决方案供应者
Overall Solution Provider

EPC交钥匙工程
EPC Turnkey Project

土建业务
Civil Engineering Business



EPC模式 EPC mode

一站式服务/交钥匙工程为客户免除了在项目设计、设备采购、工程质量、施工周期、投资控制、安全施工等方面的后顾之忧。

One stop service/turnkey engineering eliminates customers' worries in project design, equipment procurement, engineering quality, construction cycle, investment control, safety construction, and other aspects.



Company

公司概况

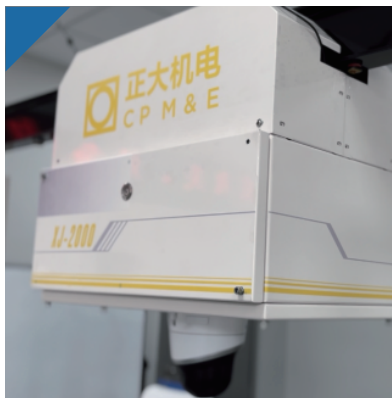
上海正芯

上海正芯科融机器人科技有限公司成立于2023年，由上海正诚投资设立，致力于巡检机器人研发及工业机器人的集成应用，提升农牧食品行业自动化、智能化水平。业务涉及养殖场机器人、服务机器人的研发制造；智能仓储设备、工业机器人的集成应用；IOT设备的研发制造及代理、软件开发、数字化咨询服务等。

Shanghai Zhengxin Kerong Robot Technology Co., Ltd. was established in 2023 with investment from Shanghai Zhengcheng. It is committed to the research and development of inspection robots and the integrated application of industrial robots, improving the automation and intelligence level of the agricultural, animal husbandry and food industry. The business involves the research and development and manufacturing of farm robots and service robots; Integrated application of intelligent warehousing equipment and industrial robots; Research and development, manufacturing, and management of IoT equipment, software development, digital consulting services, etc.



鸡场巡检机器人
Chicken Farm Inspection Robot



猪场巡检机器人
Pig Farm Inspection Robot



摄像头等IOT设备
IoT Devices Such as Cameras



工业机器人应用
Industrial Robot Applications



联系我们 Contact Us

上海正诚机电制造有限公司

Shanghai Zhengcheng Mechanical & Electrical Manufacturing Co., Ltd.

电话Tel: 021-57780134

传真Fax: 021-57782865

公司网址Web: <http://www.cpszhc.com/>

地址:

No.3-5 Rongxing Road,Rongbei Industrial Zone,Songjiang,Shanghai

正大谷瑞机电有限公司

CP-GSI Machinery Co., Ltd.

电话Tel: 021-57780134

地址:浙江省慈溪市现代农业开发区三利路

Sanli Road,Modern Agriculture Development Zone,Cixi City,Zhejiang Province

上海正宜机器工程技术制造有限公司

Shanghai Zhengyi Machinery Engineering Technology Manufacturing Co.,Ltd.

电话Tel: 021-57781645

传真Fax: 021-57781643

公司网址Web: <http://www.cpszy.com>

地址:上海市松江区茸北工业区茸兴路29号

No.29 Rongxing Road,Rongbei Industrial Zone,Songjiang,Shanghai

鑫百勤专用车辆有限公司

XinBaiQin Special Vehicle Co., Ltd.

电话Tel: 0574-63593070

传真Fax: 86-574-63593070

售后电话After-sale hotline: 0574-63593201

服务热线Service hotline: 400-098-1088

公司网址Web: www.xinbaiqin.cn

地址:浙江省慈溪市现代农业开发区三利路

Sanli Road,Modern Agriculture Development Zone,Cixi City,Zhejiang Province

正大汽车租赁有限公司

C.P. Vehicle leasing Co., Ltd.

电话Tel: 021-57781612/15940004018/18872250499 /15619221812

地址:上海市松江区茸北工业区茸兴路3-5号

No.3-5 Rongxing Road,Rongbei Industrial Zone,Songjiang,Shanghai

上海正福食品机械工程有限公司

Shanghai Zhengfu Food Processing Machinery And Engineering Co., Ltd.

电话Tel: 021-57781621

地址:上海市松江区茸北工业区茸兴路3-5号

No.3-5 Rongxing Road,Rongbei Industrial Zone,Songjiang,Shanghai

上海正牧建筑工程有限公司

Shanghai Zhengmu Construction Engineering Co., Ltd.

电话Tel: 021-57781615

地址:上海市松江区茸北工业区茸兴路3-5号

No.3-5 Rongxing Road,Rongbei Industrial Zone,Songjiang,Shanghai

上海正芯科融机器人科技有限公司

Shanghai Zhengxin Kerong Robot Technology Co., Ltd.

电话Tel: 021-57781062

地址:上海市松江区茸北工业区茸兴路3-5号5幢3层311室

No.3-5 Rongxing Road,Rongbei Industrial Zone,Songjiang,Shanghai

联系我们 Contact Us



猪场装备



鸡场装备



饲料装备



正牧建筑



正芯机器人



数智化系统



正大谷瑞



海外东北亚地区



环模业务



环保装备



海外东南亚地区



正福食品机械



农牧车辆



包装材料



汽车租赁



地址：上海松江区茸北工业区茸兴路3-5号
电话：021-57780134
邮箱：cp-me@cpgroup.cn

Shanghai Zhengcheng Mechanical & Electrical Manufacturing Co., Ltd.
Tel: 021-57780134
No.3-5 Rongxing Road,Rongbei Industrial Zone,Songjiang,Shanghai



正大机电微信公众号



上海正诚官方网站



上海正宜官方网站



鑫百勤官方网站