



做肉类食品全产业链的智能装备供应商和数智化服务商



正大机电  
C P M & E

**因为专业 所以放心**

Specialized, So Trusted



正大机电，是泰国正大集团旗下的机电装备产业群，竭诚为农牧食品企业，提供专业精良的成套装备和工程项目的系统解决方案。正大机电下辖8个公司，分别坐落在上海市松江工业开发区和浙江省慈溪现代农业开发区。正大机电所提供的机电装备和工程项目解决方案，汲取了正大集团引进的国外高端机电产品的技术精华，结合了正大集团100年的农牧业生产经验，能够帮助客户创造高价值、高回报。我们秉持“利国利民利企业”的三利经营宗旨，真诚分享在猪场建设、鸡场建设、饲料厂建设、食品厂建设以及农牧物流车辆方面的创新成果，助力世界农牧食品业的产业升级。

CP M&E is the electromechanical equipment industry group of CP Group Thailand. We are dedicated to providing professional and sophisticated complete sets of equipment and engineering system solutions for agricultural, animal husbandry, and food enterprises. CP M&E has 8 companies, located in Songjiang Industrial Development Zone in Shanghai and Cixi Modern Agricultural Development Zone in Zhejiang Province. The electromechanical equipment and engineering project solutions provided by CP M&E draw on the technical quintessence of the high end foreign electromechanical products introduced by the CP Group and combine the 100 years of agricultural and animal husbandry production experience of CP Group, it can help customers create high value and high profitability. Adhering to the three benefits business principle of "benefiting the country, benefiting the people, benefiting the enterprise", sincerely share our innovations in pig farm projects, chicken farm projects, feed mill projects, food factory projects, and agri logistics vehicles to help the industrial upgrading of the world's animal husbandry and food industry.

## 目录

<b>正大机电介绍</b> Introduction of CP M&E	<b>01-02</b>
---	--------------

<b>正大集团（中国）业务架构</b> Business Structure of CP Group(China)	<b>03</b>
--	-----------

<b>正大机电发展历程</b> Milestones of CP M&E	<b>04-05</b>
---	--------------

<b>正大机电业务结构</b> Business Structure of CP M&E	<b>06-07</b>
---	--------------

<b>公司荣誉</b> Corporate Honor	<b>08</b>
--------------------------------	-----------

<b>全球业务</b> Global Business	<b>09</b>
--------------------------------	-----------

<b>合作客户</b> Cooperation and Service	<b>10</b>
--	-----------

<b>各公司业务及产品介绍</b> Business and Product Introduction	<b>12-47</b>
--	--------------

<b>联系我们</b> Contact Us	<b>48-49</b>
---------------------------	--------------

## 愿景 Vision

做肉类食品全产业链的智能装备供应商和数智化服务商  
To be an intelligent equipment supplier and digital intelligence service provider  
for the entire meat food industry chain

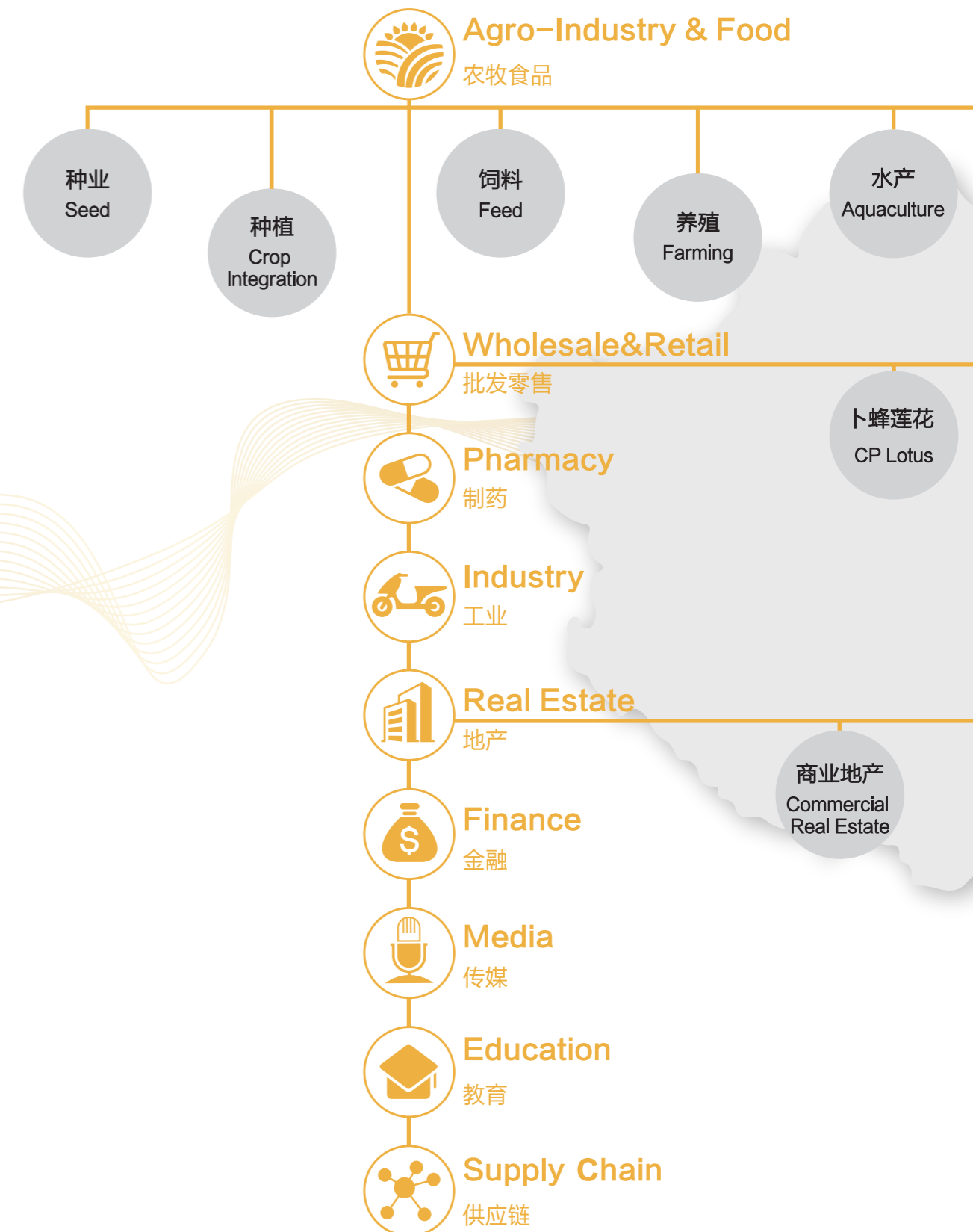
## 使命 Mission

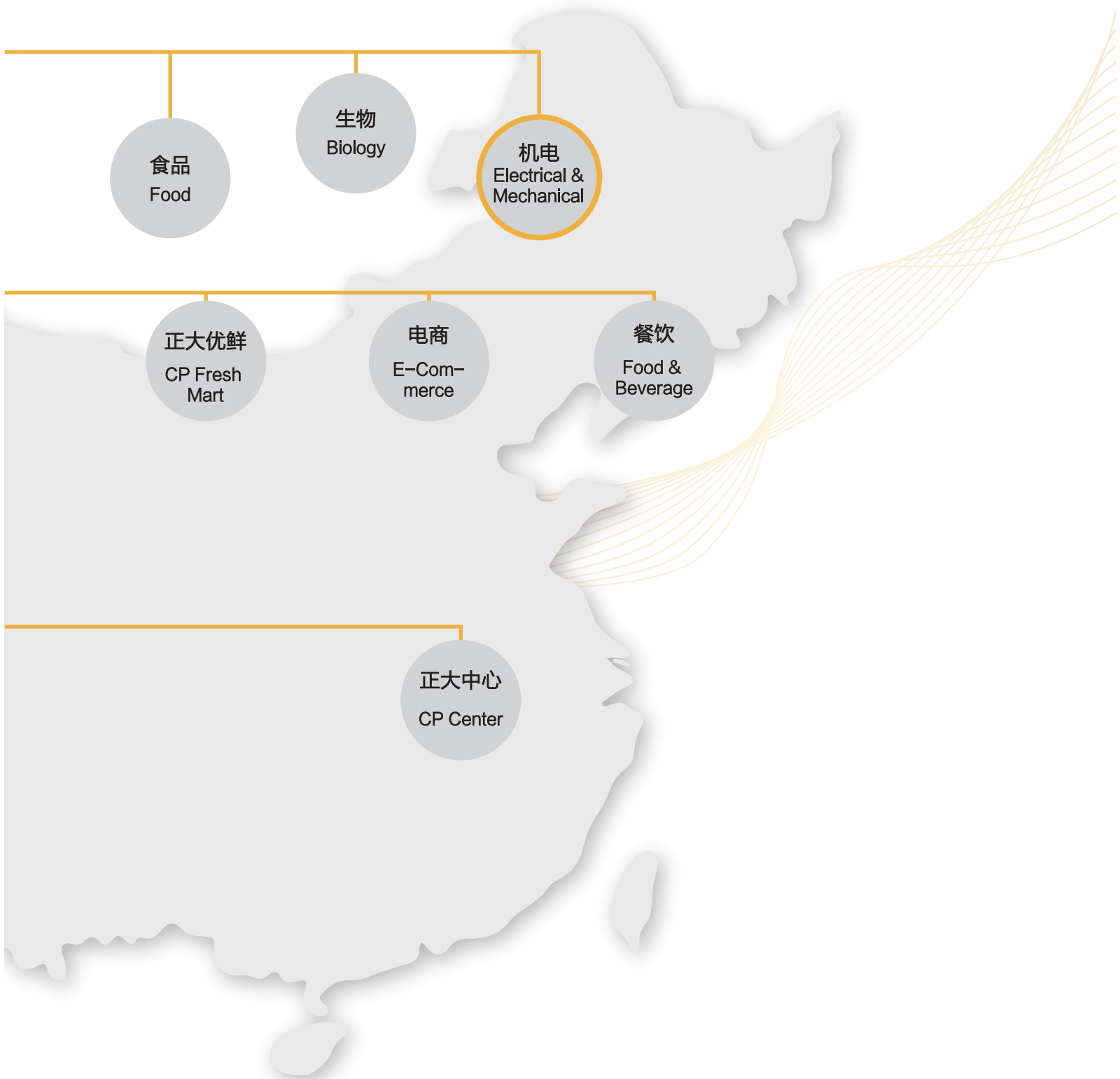
我们为养殖场/饲料厂/食品厂提供精良的成套装备和EPC交钥匙服务  
我们的数字化装备和服务，能够帮助用户实现经营生产的高效益  
我们致力于促进肉类食品行业向环境友好/资源节约方向快速良性发展  
We provide excellent complete equipment and EPC turnkey project for  
Farm/feed factory/food factory  
Our digital intelligence equipments and services can help users in achiev-  
ing cost effective production management  
Promote the rapid development of global meat industry in an eco friend-  
ly/resource effective manner

## 核心价值观 Core Values

三利原则(利国、利民、利企业) Three Benefits(Country,People,Company)  
快速优质 Speed amd Quaility  
化繁为简 Simplification  
接受变革 Adaptation to change  
不断创新 Innovation  
正直诚信 Honesty&Integrity

## 正大集团（中国）业务架构 Business Structure of CP Group(China)







正大机电  
CP M & E

## 正大机电发展历程

Milestones of CP M&E



- 上海正宜成立-以饲料工业为主体的饲料机械加工设备及配件制造商。
- Shanghai ZhengYi established.

### 1997



- 正诚获得建筑工程施工总承包三级，钢结构工程专业承包二级，建筑机电安装工程专业承包三级，高新技术企业称号；
- 正诚第一个EPC总包项目——邳州15400头养殖场通过验收。
- Complete the first EPC engineering project.

### 2016

### 1994

- 上海正诚成立-业务涵盖饲料厂整厂交钥匙工程及钢结构工程。
- Shanghai ZhengCheng established.



### 2015

- 正诚正宜经营业绩同比增长200%；
- 控股鑫百勤专用车辆有限公司；
- 新一届管理团队成立，确定新时期正大机电的愿景/使命/目标。
- Organization restructuring. Holding XinBaiQin.

### 2017

- 上海正诚自主研发的CPS饲料厂智能配料系统获得国家计算机软件著作权；
- 与美国AGCO公司合资成立正大谷瑞机电有限公司。
- CP-GSI established.



- 代表饲料厂4.0国际水平的内蒙古;
- 36万吨饲料厂顺利竣工;
- 鑫百勤搬迁至慈溪新工厂。
- Vehicle Manufacturing base established in CiXi.

## 2018



- 投资建成正大谷瑞慈溪现代化智能化畜禽设备生产基地;
- 正大机电第一个“五年规划”如期完成15400头养殖场通过验收。
- Intelligent manufacturing base established in CiXi.
- The first "five-year plan" completed on schedule.

## 2020

- 上海正牧建筑工程有限公司成立;
- 上海正宜被评为松江区“专精特新”企业。
- Shanghai Zhengmu Construction Engineering Co., Ltd. was established;
- Shanghai Zhengyi was rated as a "specialized, refined, and innovative" enterprise in Songjiang District.

## 2022

## 2019

- 与日本FUKUDA公司合资成立上海正福食品机械工程有限公司;
- 成立上海正诚江苏分公司。
- CP FUCUDA established;
- Shanghai Zhengcheng Jiangsu Branch established.

## 2021

- 正大汽车租赁有限公司成立;
- 投资建成正大中国智能制造研发基地;
- 上海正诚被评为松江区“专精特新”企业。
- C.P. Vehicle leasing established;
- CP Group Agro industry and Food Business China Area Intelligent Manufacturing R&D base established in Shan;
- Shanghai Zhengcheng was rated as a "specialized, refined, and innovative" enterprise in Songjiang District.

## 2023

- 上海正芯科融机器人科技有限公司成立。
- Shanghai Zhengxin Kerong Robot Technology Co., Ltd. was established.





## 正大机电业务结构

Business Structure of CP M&E



上海正诚机电制造有限公司



上海正宜机器工程技术制造有限公司



正大谷瑞机电有限公司



上海正福食品机械工程有限公司



鑫百勤专用车辆有限公司



正大汽车租赁有限公司



上海正牧建筑工程有限公司



上海正芯科融机器人科技有限公司

**8** 个专业化公司  
8 Specialized Companies

**5** 个技术研发中心  
5 Technology R&D Centers

**8** 个产品生产基地  
8 Product Production Bases



猪场装备  
Swine Farm Equipment

鸡场装备  
Chicken Farm Equipment

饲料装备  
Feed Equipment

正牧建筑工程  
Zhengmu  
Construction Engineering

电控事业部  
Electronic Controls Division

正芯机器人  
ZENIS Robotics

海外东南亚  
Overseas Southeast Asia

海外东北亚  
Overseas Northeast Asia

(中国) 东北地区  
Northeast (China)

环模配件  
Ring Die Accessories

环保装备  
Environmental Equipment

正福食品机械  
CP-FUKUDA Food Machine

农牧专业车辆  
Vehicles Specialised in Agriculture and Animal Husbandry

正大汽车租赁  
CP Auto Rental

包装材料  
Packaging Material

**90** 名施工管理人员  
90 Construction Management Personnel

**135** 名工程技术人员  
135 Engineering and Technical Personnel



正大机电  
CP M & E

## 公司荣誉 Corporate Honor



**182**项 专利  
182 Patents

**11**项 软件著作权  
11 Software Copyrights

参与编写行业标准  
Setting Industry Standard



**中国饲料工业协会**

**饲料机械标准化委员会**

**中国畜牧业协会工程分会**

**中国畜牧业协会物流分会**

**饲料畜牧技术与经济学会**

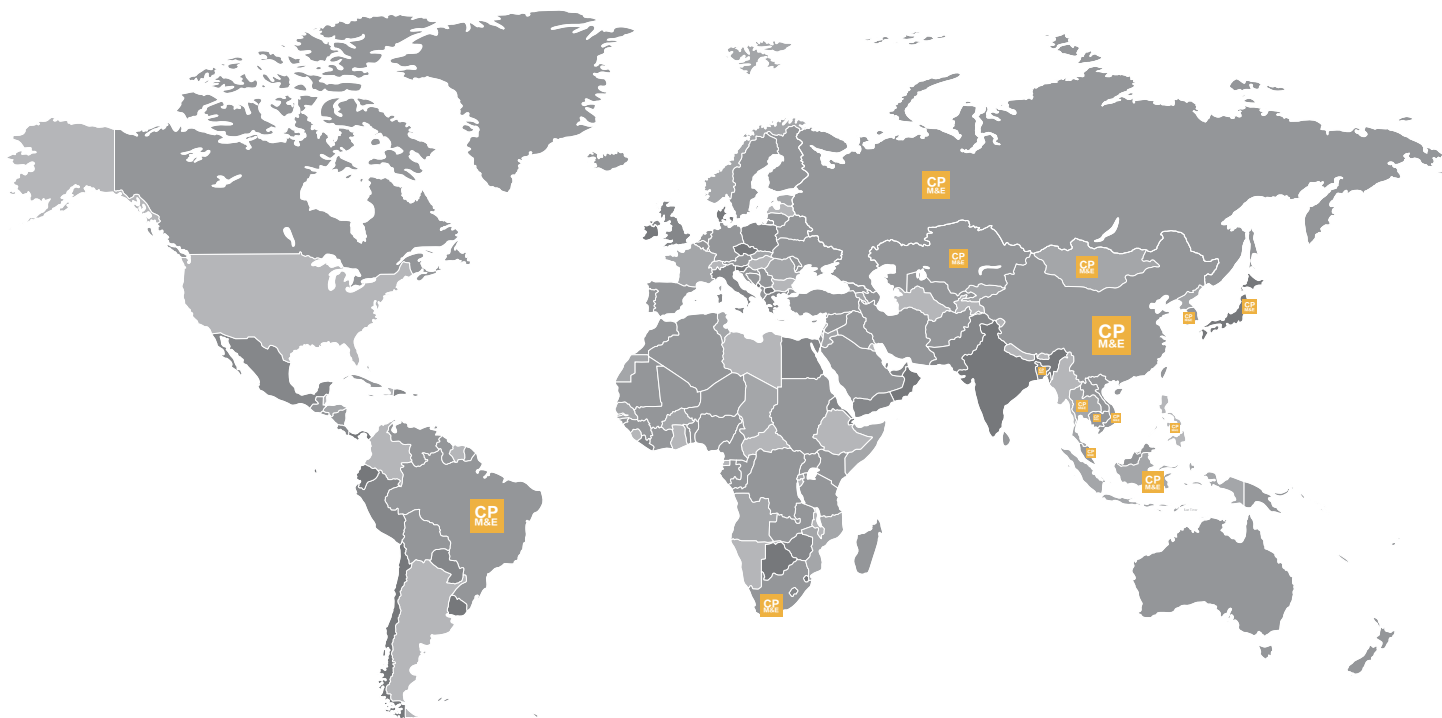
**中国林牧渔业经济学会饲料经济专业委员会**

**中国机电产品进出口商会**



正大机电  
CP M & E

## 全球业务 Global Business



**正大机电全球销售服务点：**  
**中国、泰国、印度尼西亚、马来西亚、菲律宾、越南、孟加拉国、柬埔寨、日本、韩国、俄罗斯、哈萨克斯坦、蒙古国、南非、巴西**

Global Sales Service Office:  
China, Thailand, Indonesia, Malaysia, Philippines, Vietnam, Bangladesh,  
Cambodia, Japan, South Korea, Russia, Kazakhstan, Mongolia, South Africa, Brazil

## 合作客户

Cooperation and Service



种植场  
Plantation



饲料厂  
Feed Factory



养殖场  
Farm Engineering



食品厂  
Food Factory



零售终端  
Retail

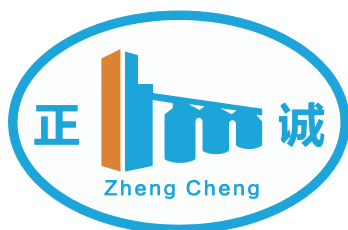


顾客  
Consumers



# Company

## 公司概况



饲料厂建设  
Feed mill Turnkey Project



猪场建设  
Swine farm Turnkey Project



鸡场建设  
Chicken farm Turnkey Project



上海正诚机电制造有限公司成立于1994年，是泰国正大集团独资企业，专注于农牧食品业项目承揽和设备供应，是上海市高新技术企业。上海正诚是集整厂方案设计、生产工艺设计、建筑结构设计、土建施工、钢结构制造与安装、设备制造安装与调试、售后服务为一体的整体解决方案的提供者。

为了推动中国饲料厂、养殖场、食品厂产品质量的提高和生产效率的提升，我们依托正大集团全球视野的优势，不断引进国际前沿的理念、技术、工艺和设备，在自动化、智能化、可视化、可追溯化、生产安全、食品安全方面的经验积累，能够在满足业主个性化需求的同时，为业主创造价值。

- 专业技术研发人员**80**人
- 公司占地面积**6000**平方米
- 建设了**150**多座饲料厂
- 建设了**300**多座畜禽养殖场
- 建设了**1000万**平米的钢结构厂房



Shanghai Zhengcheng Mechanical & Electrical Manufacturing Co., Ltd. established in 1994, wholly owned by C.P. GROUP. High tech enterprise which focusing on EPC project contracting and equipment supply of feed, farm, and food industry. Shanghai Zhengcheng is the whole solution provider including plant design, production process design, architectural design, steel structure manufacturing and installation, equipment manufacturing installation and commissioning, civil construction, after sale service.

In order to promote the improvement of the product quality and production efficiency of feed mills, farms and food factories, Shanghai Zhengcheng rely on the advantages of CP group's global vision and constantly introduce international cutting edge concepts, technologies, processes and equipments. A wealth of experience in automation, intelligence, visualization, traceability, production safety, food safety can meet the personalized needs and create value for owners.

- R & D Staff **80**
- The company covers an area of **6000** square meters
- **150** Feed Factory Projects
- **300** Farm Projects
- **10million** Square Meters of Steel Structure Plants





## 猪场项目

### Swine Farm Turnkey Project



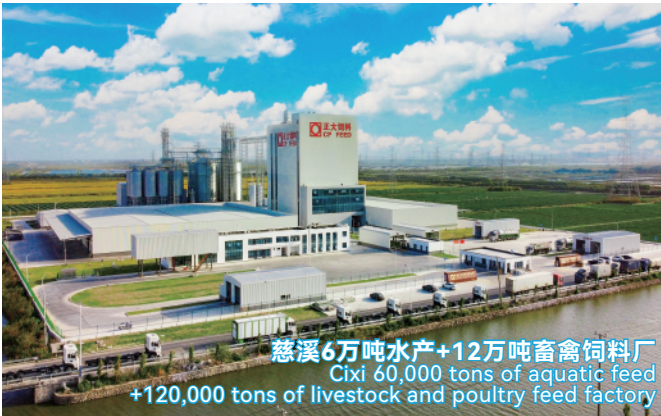
上海正诚拥有全套猪场设备并提供EPC总承包服务，产品包括：栏位系统、水线系统、料线系统、通风环控系统、电气系统、排污系统。

Shanghai Zhengcheng supplies a complete set of swine farm equipment and provides EPC service.

Products include: column system, water line system, material line system, ventilation and environmental control system, electrical system, and sewage system.



## 饲料厂项目 Feed Mill Turnkey Project

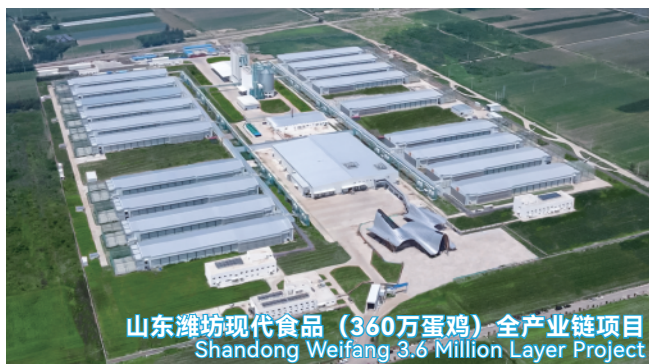


上海正诚可提供全套饲料厂设备并提供EPC总承包服务，产品包括：原料接收及存储系统、粉碎系统、配料混合系统、膨化烘干系统、制粒系统、油脂喷涂系统、成品系统、辅助系统以及配套的电控系统。

Shanghai Zhengcheng supplies a complete set of feed mill equipment and provides EPC service. Main products: raw material receiving and storage system, grinding system, blending system, expansion drying system, pelleting system, grease spraying system, bagging system, auxiliary system and electronic control system.

# 鸡场项目

## Chicken Farm Turnkey Project



上海正诚拥有全套鸡场设备并提供EPC总承包服务，可提供鸡笼系统及工程、料线系统及工程、水线系统及工程、通风系统及工程、加湿系统及工程、供热系统及工程、照明系统及工程、出粪系统及工程、环控系统及工程、集蛋系统及工程、巡检系统及工程、电气系统及工程。

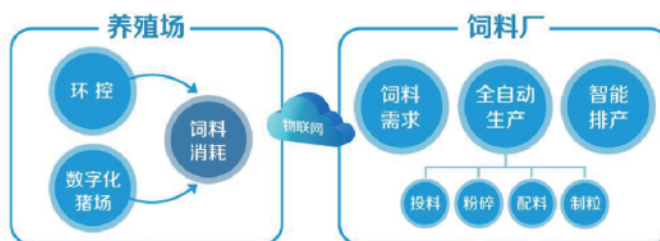
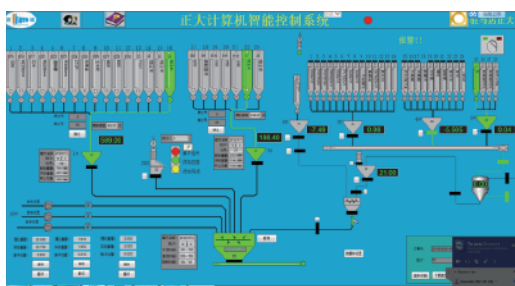
Shanghai Zhengcheng supplies a complete set of chicken farm equipment and provides EPC service. Main products: cage system, silo system, water line system, ventilation system, humidification system, heating system, lighting system, manure removal system, environment control system, egg collection system, inspection system, electrical system.

## CPS系统 CP Smart System



上海正诚自主研发的饲料厂智能控制系统CP-Smart System（简称CPS系统），可满足饲料厂自动化生产、减人增效、数据安全的目的，从硬件配置和软件架构设计上均采用先进的技术，保证了控制系统的先进性和可扩展性。

Shanghai Zhengcheng developed Feed Mill Intelligent Control System (CPS System), which can realize automatic production, increase efficiency and data security functions. Advanced technology is used in hardware configuration and software architecture to ensure the expansibility of CPS System.



## 数字化养殖系统 Digital Aquaculture System



上海正诚采用大数据、物联网、人工智能等先进技术，自主研发成功的数字化养殖系统，将养殖场装进了手机里、电脑里。该系统包括视频监控、环境监控、生物防疫、能源物资管理、猪只管理、人员管理六大功能，大幅提升养殖效率，让管理者在全球各地可以随时随地掌握养殖场的实际运营情况。

Based on Big Data, IoT, AI and other advanced technology, Shanghai Zhengcheng developed digital farming system that can running on mobile phone and computer. The system includes six functions: video monitoring, environmental monitoring, biological epidemic prevention, energy and material management, pig management and personnel management. This system significantly improves the efficiency of aquaculture, Managers can be kept abreast of the actual operation of farms anywhere.





由泰国正大集团和美国爱科集团共同投资成立的正大谷瑞机电有限公司，以爱科旗下养猪设备AP、肉鸡养殖设备CUMBERLAND、蛋鸡笼养设备TECNO、仓储设备GSI的产品技术为基础，不断革新和创新，为世界范围内的养殖企业量身定制畜牧养殖机械成套设备，并提供整体解决方案。公司产品涵盖种猪、育肥猪、蛋鸡、肉鸡养殖相关设备，主要包括喂料系统设备、环控系统设备、养猪栏体系统设备、蛋鸡养殖系统设备、种鸡平养系统设备等。公司坐落于慈溪国家级现代农业产业园内，占地200亩，于2020年8月正式落成，全面量产。正大谷瑞集成钣金、焊接、辊压成型、注塑、挤塑、智能装配六大核心工艺，配备有激光下料产线、焊接机器人产线、注塑挤塑产线、辊压成型产线等47台套，并针对产品特性开发了12条定制化智能装配线，确保产品加工及装配精度。利用德国SAP S/4HANA集成式智能 ERP 管理系统以及美国PTC公司下属CREO和Windchill系列图形管理软件，通过数字化管理与柔性智能产线的有机融合，使得正大谷瑞成为全球规模大、产品品类全、加工设备及工艺先进，产品技术来源前沿的现代化养殖设备产业基地。为上海正诚EPC交钥匙工程提供品质优良、技术先进的配套产品。



蛋鸡养殖设备  
Layer Cage Equipment



仓储设备  
Storage Equipment



种鸡养殖设备  
Broiler Cage Equipment



家畜养殖设备  
Swine Equipment

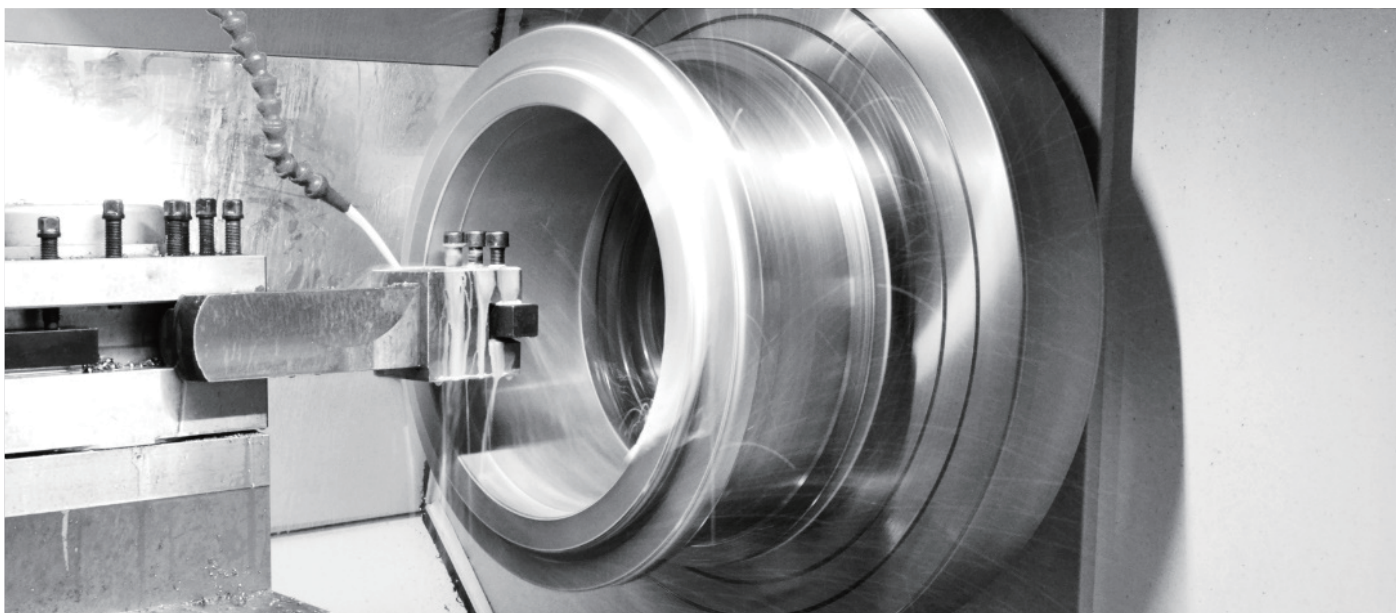


## Company

### 公司概况



CP-GSI is a joint venture between CP Group and AGCO Group. Integrating technology of AP, Cumberland, TECNO, and GSI. CP-GSI focuses on the global swine, chicken, and layer breeding enterprises tailored to sophisticated, economic equipment and overall solutions. The main products include swine, chicken feeding system equipment, environmental control system equipment, pig penning system, modern poultry farm cages, and modern flat breeding chicken equipment. CP-GSI is located in Cixi's national modern agricultural industrial park, covering an area of 200 acres, and was officially completed in August 2020. CP-GSI integrates six core processes of sheet metal, welding, roll forming, injection molding, extrusion, and intelligent assembly, with a laser blanking line, welding robot line, injection molding line, roll forming line, and developed 12 custom intelligent assembly lines to ensure the accuracy of product processing and assembly. Using the integrated intelligent ERP system of SAP S/4HANA and the graphic management software of CREO and Windchill, combining digital management and flexible intelligent product lines, CP-GSI becomes a modern breeding equipment industrial base with global scale, complete product category, advanced processing equipment, and technology, and advanced product technology source. CP-GSI is a breeding equipment base and provides high-quality and advanced technology products for Shanghai Zhengcheng EPC projects.



## Company

### 公司概况



上海正宜机器工程技术制造有限公司成立于1997年，是以饲料工业为主体的饲料机械加工设备及配件制造商、饲料厂环保方案及相关环保设备的提供者、微波食品设备的研发制造者。上海正宜在海内外设立多家服务网点及办事机构，较早的取得了ISO9000认证，拥有多项发明专利，是上海市高新技术企业。上海正宜在产品研发上不断创新与发展，自主研发了全自动智能环模修复机、粉碎机、智能藻类输送系统、微波光氧除臭设备、污水处理设备、微波食品设备等。从1999年至今，上海正宜已为行业众多综合性集团客户提供过产品及服务，包括饲料机械成套设备及配件、饲料厂环保除臭项目、污水处理工程项目、微波食品工程项目等。

上海正宜的环模产品覆盖近200种规格型号,拥有超过60000个实际环模设计生产经验，涉及畜禽料、牛羊料、水产料、生物质木屑料等原料制粒工艺，在国内及东南亚市场享有较高的知名度和良好的声誉。

公司始终坚持“四个零”的质量方针，即“材料零缺陷、设计零缺陷、加工零缺陷、工序零漏检”。并以客户为中心，竭诚为客户提供优质的产品和服务。在未来的发展中，上海正宜将始终秉持“技术是核心、质量是生命”的价值观，在产品研发不断创新，为客户创造价值，为中国乃至世界的饲料及食品工业的发展作出贡献。



Shanghai Zhengyi Machinery Co, Ltd, established in 1997, is a professional manufacturer of feed machinery processing equipment and accessories for the feed industry, a provider of environmental protection solutions and related environmental protection equipment for feed factories, and a Researcher & manufacturer of microwave food equipment, Zhengyi is a high tech enterprise in Shanghai, who has multiple service outlets and offices both domestically and internationally. We obtained ISO9000 certification earlier and have many invention patents. Zhengyi continuously innovates and develops in products' research and development, and independently develops multi function CNC ring die repairing machines, hammer grinders, intelligent algae breeding and transportation systems, microwave photo oxygen deodorization equipment, sewage treatment equipment, and microwave food equipment. Since 1999, Zhengyi has provided products and services for other group customers, including feed machinery equipment and accessories, feed factory environmental protection deodorization projects, sewage treatment projects, and microwave food projects.

Zhengyi's ring die products cover nearly 200 models of different sizes. it has done the design and production of practical dies more than 60000 times, involving all kinds of raw material granulation processes such as livestock and poultry feed, cattle and sheep feed, aquatic feed, and biomass wood chips.

The company always adheres to the quality policy of "four zeros": zero defects in materials, design, processing, and inspection. Customer oriented, try best to produce high-quality products for customers and provide the best service. Zhengyi will always adhere to the value of "technology is the core, quality is the life", constantly innovate in product research and development, create value for customers, and contribute to the development of the feed and food industry in China and even the world.

## 饲料机械 Feed Machinery



环模  
Ring Die



压辊总成  
Roller Assemble



锤片式粉碎机  
Hammer Mill



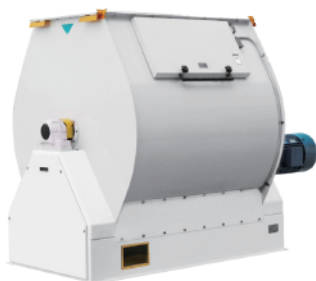
超微粉碎机  
Vertical Mill



齿式粉碎机  
Tooth Mill



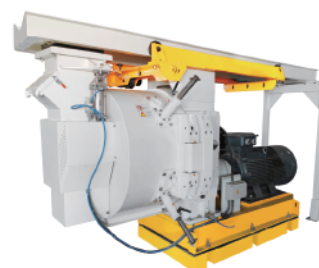
双轴桨叶混合机  
Double-shaft Paddle Mixer



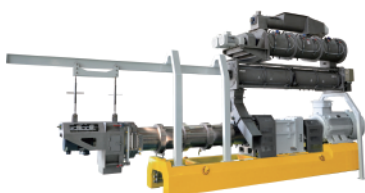
单轴高速混合机  
Single-shaft Paddle Mixer



全自动微量元素秤  
Automatic Micronutrient Scale



制粒机  
Granulator



双螺杆膨化机  
Twin Screw Extruder



调质器  
Conditioner



保质器  
Quality Retaining Device



**双轴差径调质器**  
DDC Different Diameter Cylinder  
Conditioner



**翻板式冷却器**  
Cooler with Flip Plate Type



**烘干机**  
Dryer



**破碎机**  
Crusher



**回转分级筛**  
Rotary Sifter



**打包称**  
Bagging Scale



**提升机 刮板机**  
Bucket Elevator Chain Conveyor



**圆筒初清筛**  
Cylinder Cleaning Sieve



**旋转分配器**  
Rotary Distributor

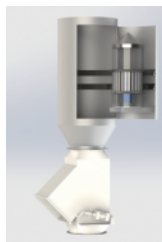


**管形螺旋输送机**  
Tubular Screw Conveyor

## 饲料机械 Feed Machinery



圆锥粉料清理筛  
Conical Sieve for Powder



自清式永磁筒  
Permanent Magnet Cylinder by  
Self-cleaning



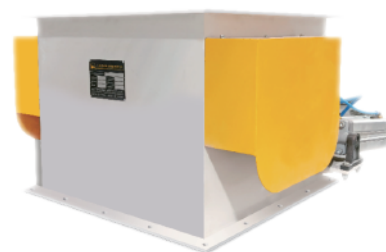
脉冲除尘器  
Pulse Dust Collector



脉冲除尘器  
Pulse Dust Collector



气动三通  
Pneumatic Three-way



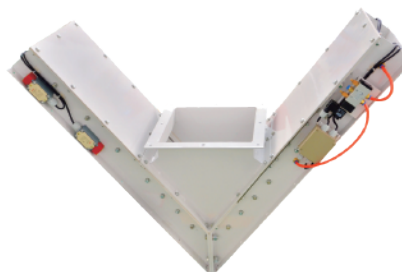
气动圆弧闸门  
Pneumatic Arc Gate



气/电动闸门  
Pneumatic Gate/Electric Gate



槽形螺旋输送机  
Trough Screw Conveyor



气动V型闸门  
Pneumatic Arc Gate

---

## 环保设备及工程

Environmental Protection Equipment and Engineering



**脉冲除尘系统**  
Pulse Dust Removal System



**旋流板式喷淋塔**  
Rotary Plate Spray Tower



**微波光氧除臭设备**  
Pulse Dust Removal System



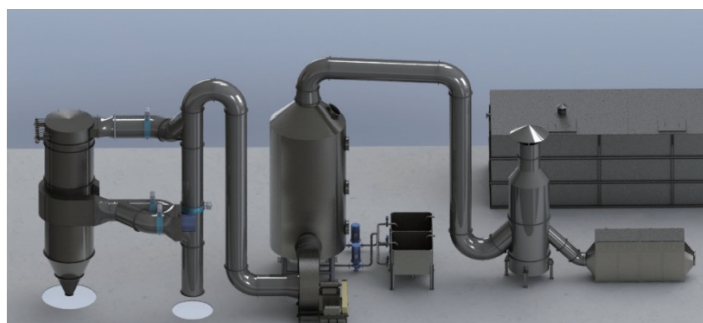
**循环喷淋系统**  
The Circulating Spray System



**微波光氧系统**  
Microwave Photooxygen System



**一体化水处理设备**  
Integrated Water Treatment Equipment



**环保除臭系统**  
Environmental Deodorization System

## 虾场装备及水处理设备

### Shrimp Farm Equipment and Water Treatment Equipment



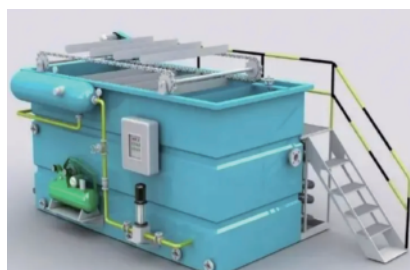
**RO成套装备**  
Ro Complete Equipment



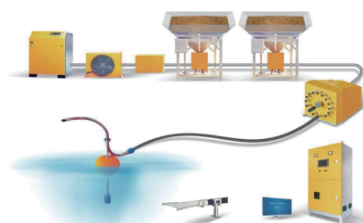
**曝气生物滤池**  
Aerated Biological Filter



**高效厌氧反应器**  
High-rate Anaerobic Reactor



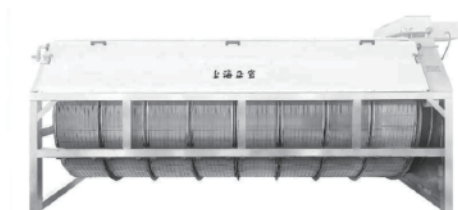
**一体化气浮机**  
Integrated Air Flotation Machine



**智能化气力投喂系统**  
Pneumatic Feeding System



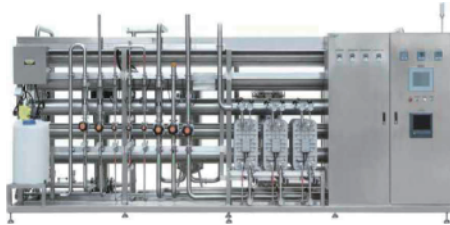
**智能化履带式微滤机**  
Smart Belty Pefilter



**智能化转鼓式微滤机**  
Smart Rotary Drumfilter



**蛋白质分离器**  
Protein Skimmer



**超纯水设备**  
Ultra-pure Water Equipment



**软化水系统**  
Softening Water System



**超滤系统**  
Ultrafiltration System



**高效沉淀池**  
High Efficiency Sedimentation Tank



**二氧化氯发生器**  
Chlorine Dioxide Generator



**多介质过滤器**  
Multi Media Filter



**臭氧发生器**  
Ozone Generator

# Company

## 公司概况



鑫百勤专用车辆有限公司（以下简称鑫百勤）是一家专业致力于设计、研发和生产散装饲料运输车、散装饲料罐、畜禽运输车、冷藏车的高新技术企业，也是集产品研发、工程设计、生产制造、销售安装为一体的新型企业。在2008年成立于上海，2015年由正大集团收购，正式并入世界上最大的华人跨国公司之一的正大集团旗下。

公司位于长三角经济区，慈溪国家现代农业产业园内，总投资将近2个亿，占地面积100亩，员工人数350人，高级技术人员30人，年产量2000辆。核心产品有散装饲料运输（半挂）车、智能环保畜禽（半挂）车、智能环保雏禽运输车、多功能食品冷链运输车、农业机械和环保车辆。

公司与中国畜牧业龙头企业如正大集团、牧原集团、新希望、正邦集团、双胞胎、中粮集团等国家农牧业大型集团企业保持着长期稳定的合作，并与海外诸多知名企业如马来西亚 GSI、越南 Dabaco 集团建立了良好的战略合作关系，在东南亚享有较高知名度。



XinBaiQin Special Vehicle Co., Ltd. (XinBaiQin) is a high tech enterprise, specializing in the R&D and production of bulk feed transport trucks, bulk feed tanks, poultry and livestock transport truck, and refrigerated transport truck, as well as a new enterprise integrating product R&D, engineering design, production, manufacturing, sales and installation. Founded in Shanghai in 2008, it was acquired by CP Group in 2015, one of the largest multinational Chinese companies in the world. The company is located in National Modern Agricultural Industrial Park, Cixi City, the Yangtze River Delta Economic Zone, with a total investment of nearly 200 million, an occupied area of 100mu, 350 employees, and 30 senior technicians, and an annual output of 2,000 vehicles. Its core products cover semi trailers, poultry and livestock transport semi trailer, poultry and livestock transport truck, and refrigerated transport truck.

The company has maintained a long term and stable cooperation relationship with China's leading animal husbandry enterprises such as CP Group, Mu Yuan Group, New Hope, ZhengBang Group, Twins, and COFCO Group, as well as a good strategic cooperation relationship with many overseas well known enterprises such as Malaysia's GSI and Vietnam's Dacoit Group. In short, it has enjoyed a high reputation in Southeast Asia.

**引领行业发展      创造客户价值**



## 产品列表

### Product List

#### 散装饲料运输车（电动绞龙）

#### Bulk Feed Transport Truck(Electric Auger)



散装饲料运输车（电动绞龙）是国内率先使用减速机无线遥控技术，可单人完成操作的一款饲料运输车，采用ABB电机IP55级防护、施耐德电气元件，欠压等电控连锁保护；永磁发电机节能降噪，省电效率高，可长期免维护使用；使用国企优质钢材罐体，提高充满系数，罐体采用一次性成型技术，强化焊接，保证罐体强度，罐体外部一道喷砂、二道打磨、三道油漆三道极致工艺抗腐耐久；绞龙托架采取安全报警模式，避免危险发生；使用特种轴承，使得车辆寿命提升，免维护，安全省事。

Electric Auger Bulk Feed Transport Truck is the domestic first to apply wireless remote control technology of the reducer, operated by a single person. It adopts ABB motor IP55 protection, Schneider electrical components, under voltage and other electronic interlocking protection; it is with permanent magnet generator energy, which conserves energy and reduces noise, saves power and improves efficiency, and is with long term free maintenance; it is with the state owned high quality steel inverted cone tank for the higher filling coefficient. And the tank adopts one time molding technology, strengthening welding and ensuring its strength, and its exterior goes through 3 processes of extreme corrosion resistance and durability: first sandblasting, second polishing, and third paint spraying; the auger bracket adopts the safety alarm mode to avoid danger, it is with special bearings for the longer vehicle life and free maintenance, which is safe and easy.

#### 散装饲料半挂车（电动绞龙）

#### Bulk Feed Transport Semi-trailer (Electric Auger)

采用ABB电机IP55级防护、施耐德电气元件，欠压等电控连锁保护；永磁发电机节能降噪，省电效率高，可长期免维护使用；使用国企优质钢材倒锥罐体，提高充满系数，罐体采用一次性成型技术，强化焊接，保证罐体强度，罐体外部一道喷砂、二道打磨、三道油漆三道极致工艺抗腐耐久；使用特种轴承，使得车辆寿命提升，免维护，安全省事。



Electric Auger conveyor bulk feed transport semi trailer adopts ABB motor IP55 protection, Schneider electrical components, under voltage and other electronic interlocking protection; it is with permanent magnet generator energy, which conserves energy and reduces noise, saves power and improves efficiency, and is with long term free maintenance; it is with the state owned high quality steel inverted cone tank for the higher filling coefficient. And the tank adopts one time molding technology, strengthening welding and ensuring its strength, and its exterior goes through 3 processes of extreme corrosion resistance and durability: first sandblasting, second polishing, and third paint spraying; it is with special bearings for the longer vehicle life and free maintenance, which is safe and easy.

## 散装饲料运输车（气力输送）

Bulk Feed Transport Truck (Pneumatic Conveying)



新款智能气卸式散装饲料运输车，行业领先。通过CG模拟，大数据测试，使得结构更合理，效率更高；4kW光纤激光工艺，数控折弯，机器人焊接，精密加工；高配底盘，性能稳定，操控便捷，驾驶舒适；使用大型国企优质钢材，韧性与延展性好，品质连续有保障，罐体充满系数高；罐体外部一道喷砂、二道打磨、三道油漆三道极致工艺防腐耐久；使用先进无油空压机，低压力，出风量大，抗污、耐久，控制方便。

新款智能气卸式散装饲料运输车输送距离远、饲料破碎率低、无分层、无残留，结构简单，易于操作、故障率低，易维修，采用先进无油空压机，出风量大，输送快，抗污能力强。

The new intelligent pneumatic conveying bulk feed truck is first made in China, leading the industry. After receiving CG simulation and big data test, it has more reasonable structure and higher efficiency; it is equipped with 4,000K Woptical fiber laser technology, numerical control bending, robot welding, precision processing; it is also with high configuration chassis, stable performance, convenient control, comfortable driving; it is with WISCO/Shasteel hot rolling steel body, good toughness and ductility, continuous quality guarantee; it is with large state owned high quality steel cone tank for the higher filling coefficient; it is with the tank, whose exterior goes through 3 processes of extreme corrosion resistance and durability: first sandblasting, second polishing, and third paint spraying; it is with advanced oil less air compressor, equipped with large air output, anti pollution, and durability, and easy to control.

The new intelligent pneumatic conveying bulk feed transport truck has the advantages of long conveying distance, low feed crushing rate, no stratification, no residue, simple structure, easy operation, low failure rate, easy maintenance, advanced oil less air compressor, large air output, fast transportation, strong anti pollution ability, and in built weight unloading system, which can accurately control the unloaded weight.

## 散装饲料半挂车（气力输送）

Bulk Feed Transport Semi-trailer (Pneumatic Conveying)

使用大型国企优质钢材圆罐罐体，提高充满系数；罐体外部一道喷砂、二道打磨、三道油漆，三道极致工艺防腐耐久。

气卸式散装饲料运输半挂车输送距离远、饲料破碎率低、无分层、无残留，结构简单，易于操作、故障率低，易维修，采用先进无油空压机，出风量大，输送快，抗污能力强。



It is with the state-owned high-quality steel inverted cone tank for the higher filling coefficient; the exterior of tank goes through 3 processes of extreme corrosion resistance and durability; first sandblasting, second polishing, and third paint spraying.

The pneumatic conveying bulk feed transport semi trailer is featured with long conveying distance, low feed crushing rate, no stratification, no residue, simple structure, easy operation, low failure rate, and easy maintenance; large air output, fast transportation and strong anti pollution ability with the adoption of advanced oil-less air compressor.



## 畜禽运输车

Poultry and Livestock Transport Truck



畜（雏）禽运输车，引进国外专用车辆技术开发，并逐年升级适合中国养殖特色的细节是满足国家农业部79号文件全部要求的运猪车。

车辆采用全铝合金封闭结构，车身自重轻，装载量高；有自动升降的顶部和垂直升降平台，伞顶开启会自动报警；同时配备全程主导安全服务；车厢内配备温度及视频监控、夜间照明、空调、自动饮水系统、喷淋降温系统、自动空气过滤系统以及保温系统，完全满足国家农业农村部第79号文件的防疫要求，安全准确的完成畜禽运输任务。

Poultry and livestock transport truck is applied to transport pigs. It is developed based on the foreign special purpose vehicle technology, and upgraded year by year in order to be consistent with the details of China's breeding characteristics and meet all the requirements of the Ministry of Agriculture No. 79 announcement.

The transport adopts the structure fully closed with aluminum alloy, with light body weight and highloading capacity; It has an automatic lifting roof and vertical lifting platform. When the canopy is opened, itwill automatically alarm; it is also equipped with the leading safety service in the whole process; the transport body is equipped with temperature video monitoring, night lighting, air conditioning, automatic drinking water system, spray cooling system, automatic air filtration system and insulation system, which full meet the epidemic prevention requirements of No. 79 announcement of China's Ministry of Agriculture and Rural Affairs areas, and safely and accurately complete the task of poultry transportation.

## 果蔬自动拣选运输车

Auto-picking truck

由北汽集团生产的大功率欧马可底盘、鑫百勤高端全封闭聚氨酯板块拼装保温厢、开利公司陆上运输冷暖机组、自主研发自动控制拣选移动装卸系统、凯卓立公司滚筒式升降尾板等系统组成，可实现厢内温度恒温设定，运输货物装卸自如，一名司机就可以轻松的完成运输、超配、拣选、卸货的果蔬配货工作。



With the high power Aumark chassis produced by Baic Group, removable insulated compartments produced withXinbaiqin high end fully enclosed polyurethane plate, land car riage heating and cooling unit from Carrier, self developed auto picking mobile handling system, drum type lifting tail plate from Cadro Company, it can maintain constant temperature in the compartment, and the transport goods with free handling. A driver can easily complete the fruit and vegetable distribution work of transportation, distribution, picking, and unloading.

## 种蛋雏苗车

### Breeding Eggs and Baby Chick Truck

- 制冷装置，两套设计，互为备份。一套为独立前置式S1250制冷系统，一套为底置式C700制冷系统；
- 加热装置，三套加热，一套为燃油加热系统散热量、一套为独立机组加热装置、一套为底置式机组加热；
- 通风装置及检测：安装10组原装进口变频直流风机、安装回风过滤装置、装二氧化碳检测装置、安装无线温度监控装置；
- 厢内固定消毒照明配置：安装紫外线消毒灯2个，照明灯2个；
- 设计运输时舱内温度：20℃-26℃，二氧化碳设定 $\leq$ 3000ppm。



- Refrigeration device, two sets of design, backup each other: an independent front mounted S1250 refrigeration system and a bottom mounted C700 refrigeration system;
- 3 sets of heating devices: a heat dissipation of fuel heating system, an independent unit heating device, and a bottom mounted unit heating;
- Ventilation device and detection: install 10 sets of original imported frequency conversion DC fans, return air filter device, carbon dioxide detection device and wireless temperature monitoring device;
- Fixed and disinfected lighting configuration in the vehicle: install 2 ultraviolet disinfection lamps and 2 lighting lamps;
- The designed compartment temperature in transport: 20℃-26℃, the carbon dioxide  $\leq$ 3000ppm.

## 畜禽运输半挂车

### Livestock and Poultry Transport Semi trailer

畜禽运输半挂车，引进荷兰BERDEX专用车辆技术开发，并逐年升级适合中国养殖特色的细节，满足国家农业部79号文件全部要求的运猪车。

底架采用Q345热镀锌，箱体为全铝合金型材，顶板自由升降，空气悬挂，铝合金钢圈；车厢内配备夜间照明、自动饮水、喷淋降温系统，满足国家农业农村部第79号文件。



The semi-trailer for livestock (young) and poultry transportation is developed with the introduction of Dutch BERDEX special vehicle technology, and is upgraded year by year to fit the details of Chinese breeding industry . It is the only pig transport truck in China that meets all the requirements of the Ministry of Agriculture No. 79 document.

The bottom frame is made of Q345 hotdip galvanized, the bodywork is made of all aluminum alloy profiles, the top plate is freely lifted, air suspended, and aluminum alloy steel rims; the compartment is equipped with night lighting, automatic drinking water, and spray cooling system, which meets the requirements of the Ministry of Agriculture and Rural Affairs No. 79 file.



## 高端冷链运输

Cold chain Transportation

- 高强度箱体，确保运输质量；
- 底部波纹面城墙式通风道轨，保证厢内温度；
- 后门采用多齿三元乙丙密封条，密封效果好；
- 五金采用304镜面不锈钢材质，寿命长；
- 选装推拉步梯，方便人员出入及装卸；
- 可翻转铝合金侧护及一体铝合金挡泥瓦。

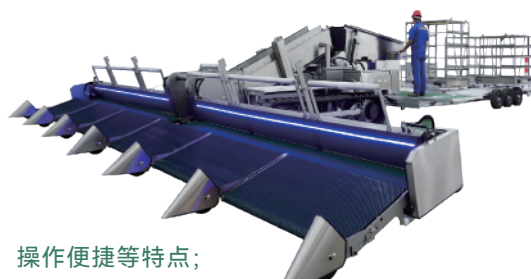


- High strength compartment ensures transportation quality;
- Ventilation track in a corrugated wall type at the bottom ensures the temperature inside the vehicle;
- The rear door adopts multi tooth EPDM sealing strip with good sealing effect;
- The hardware is made of 304 mirror stainless steel with long service life;
- Push and pull step ladder is installed to facilitate personnel access and loading and unloading;
- Overturnable aluminum alloy side guard and integral aluminum alloy mudguard.

## 智能化坪养抓鸡车

Chicken Harvester

- 节能、高效、使用成本低、鸡只损伤率低；
- 笼筐转换车采用免修实心轮胎，工作稳定；
- 全车开合、集中、提升、装笼均用液压马达完成；
- 先进的电控液压系统充分发挥了自动行走、履带逆转、输送高效、操作便捷等特点；
- 加宽的橡胶履带和加高分子支重轮使设备具有行走无音、不损伤路面、稳定性强等特点；
- 动力采用常柴4100、新柴490柴油、久保2403发动机（三款机型可根据用户需求选装）；
- 整体车架采用45# 碳钢，经过热镀锌处理，上装部分全部采用304# 不锈钢结构，具有防腐好、强度高等优点；
- 电控部分采用德国进口原件PLC智能程序，具备触摸式电容显示屏，工作参数根据工作需要随时输入设定。



- Energy saving, high efficiency, low cost, low damage rate of chicken;
- Users can freely choose engine from Changchai 4100, Xinchai diesel 490 and Kubota 2403;
- The cage to basket conversion vehicle adopts repair free solid tires to guarantee stable operation;
- The overall frame is made of 45# carbon steel being hot dip galvanized, and the upper part is all made of 304# stainless steel structure enjoying good corrosion resistance and high strength;
- The widened rubber track and polymer support wheels enable it to be silent in walking, no damage to the road, and strongly stable;
- The opening and closing, centralization, lifting, and cage installation of the entire vehicle are all completed by hydraulic motors;
- The advanced electronically controlled hydraulic system fully achieves automatic walking, track reversal, efficient conveying, and convenient operation;
- The electronic control part adopts the original imported from Germany PLC intelligent program with touch type capacitive display and in which working parameters can be input and set at any time according to work needs.

## 液态有机肥撒施机

### Liquid Organic Fertilizer Spreading Truck



液态有机肥撒施机用来解决养猪场粪肥沼液处理的难题，迎合国家农牧结合的政策，养护土地，环保排污。均匀施肥，养护土地，开沟、施肥、覆土作业一体化进行，液压制动同时可选装空气制动，适配不同制动形式的拖拉机。

The liquid organic fertilizer spreading truck can be used to solve the problem of manure and digested effluent treatment in pig farms. It provides an environmentally friendly solution to the waste treatment and land conservation in line with the national policy of agro animal husbandry.

It has the advantages of application of fertilizer uniformly over the field, conservation of the land and integrated operations of ditching, fertilizing and soil covering. With the installation of hydraulic brake and optional installation of air brake, it is suitable for tractors with different braking forms.

## 密闭式好氧发酵罐

### Closed Aerobic Fermentation Tank

好氧发酵是在发酵罐内部输送空气和进行搅拌，在氧气充足的条件下，通过好氧菌的作用，分解家畜粪便、淤泥、厨余垃圾等有机废弃物，利用有机废弃物的分解热蒸发掉废弃物中的水分，使有机废弃物变为优质有机肥。

发酵罐特点：具有设备体积小、密封式处理，无污染、保温好、不受季节寒冷所限、三层结构、操作管理简单、耗能低。

Aerobic fermentation is the process of transporting air and stirring inside, decomposing organic waste such as manure, sludge and kitchen waste via aerobic bacteria under the condition of sufficient oxygen. And then the heat produced in the decomposing process is used to evaporate the water in the waste, so that the organic waste becomes high quality organic fertilizer.

Features of the fermentation tank: small in size, closed process thus no pollution and helpful to preserve heat, not limited by seasonal factors like freezing conditions, three layer structure, easy operation and management, and low power consumption.





租正大车 贴用户心

Customized service made cars your own

## Company

### 公司概况

正大汽车租赁有限公司成立于2021年，总部位于上海，近30家分公司分布于中国各省市自治区。公司致力于提升正大集团中国区各公司的出行与用车服务，以及高效利用资产的金融效益和车辆运营过程中车联网的数智化效益，并推动新技术在农牧食品及零售行业的快速应用。

C.P. Vehicle Leasing Co., Ltd was established in 2021 in Shanghai, and nearly 20 branches are located in most of the provinces. It focuses on improving the travel service of CP group (China), efficiently utilizing the financial benefits of assets and the digital intelligence benefits of vehicle networking, and promoting the rapid application of new technologies in the Agro industry and retail industry.

- 乘用车的长租业务
- 农牧物流车辆的长租业务
- 城市配送类车辆的长租业务
- 其他特殊设备的长租业务

- Long-term rental of passenger vehicles
- Long-term rental of Agro industry and Food vehicles
- Long-term rental of Urban delivery vehicles
- Long-term rental of other special vehicles



总部-上海  
分公司

内蒙古 黑龙江  
浙江 安徽 湖北  
江西 辽宁 广西  
云南 广东 四川  
陕西 河南 江苏  
湖南 贵州 新疆  
海南 河北 山东  
甘肃 重庆 山西  
福建 吉林

衡水 襄阳 潍坊

## 主营业务

Main Business

### 乘用车的长租业务

Long-term Rental of Passenger Vehicles



### 农牧物流车辆的长租业务

Long-term Rental of Agro-industry and Foodv Vehicles



散装饲料运输车  
Bulk Feed Transport Truck



环保智能畜禽运输车  
Poultry and Livestock  
Transport Truck



种蛋运输车  
Breeding Eggs Transport Truck

### 城市配送类车辆的长租业务

Long-term Rental of Urban Delivery Vehicles



冷链运输车  
Cold-chain Transportation



新能源城配车  
New Energy City Delivery Vehicle



皮卡  
Pickup Truck

### 其他特殊设备的长租业务

Long-term Rental of Other Special Vehicles



叉车  
Fork Truck



仓储机器人  
AGV



无人机  
UAV



正福食品机械  
CP-FUKUDA FOOD MACH

食品工程整体解决方案的供应者

## Company

### 公司概况

上海正福食品机械工程有限公司成立于2019年，由上海正诚机电制造有限公司与日本株式会社福田FUKUDA合资，位于上海市松江区。正福是一家专业从事食品机械研制、开发、生产、集料、工贸为一体的企业。凭着对先进技术的不断探索、研究和应用，公司发展已初具规模，并拥有先进的生产设备、丰富的制造经验、高素质的科研人才和专业的售后服务队伍。公司产品已广泛应用于各个领域，遍及全国，并远销海外国家和地区。主要产品有：全自动炒锅、高周波解冻机、全自动灌装机、和面机、轧面机、拌馅机、气调包装设备等各领域食品机械。我们始终秉持以优质的产品、优惠的价格和良好的售后服务，来赢得每一位客户的信赖。

Shanghai Zhengfu Food Processing Machinery Engineering Co., Ltd. was established in 2019 as a joint venture between Shanghai Zhengcheng Mechanical and Electrical Manufacturing Co., Ltd. and FUKUDA Co., Ltd., located in Songjiang District, Shanghai. Zhengfu is an enterprise specializing in the research, development, production, aggregate, industry, and trade of food machinery. With the continuous exploration, research, and application of advanced technology, the company's development has begun to take shape and has advanced production equipment, rich manufacturing experience, high quality scientific research personnel, and a professional after sales service team. The company's products have been widely used in various fields, all over the country, and exported to overseas countries and regions. The main products are automatic frying pans, high frequency thawing machines, automatic filling machines, kneading machines, noodle rolling machines, stuffing mixing machines, modified atmosphere packaging equipment, and other food machinery in various fields. We always uphold high quality products, preferential prices, and good after sales service to win the trust of every customer.

---

## 产品列表

Product List

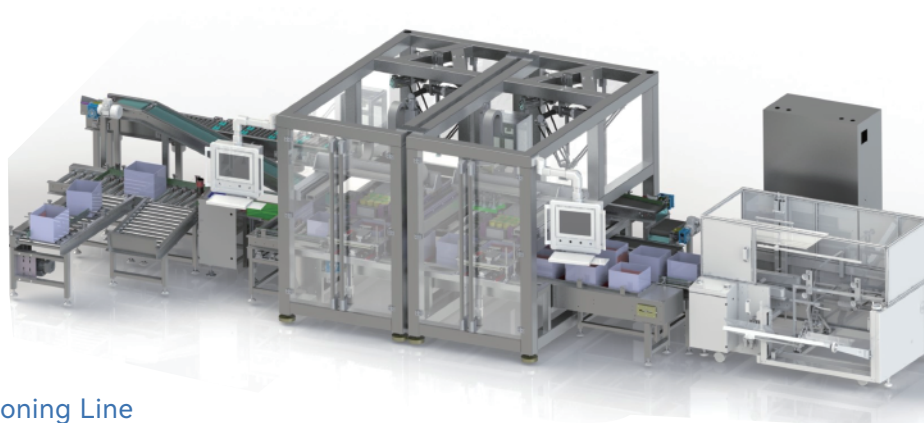
### 全自动米饭生产线

Fully Automatic Rice Production Line



### 全自动装箱线

Fully Automatic Cartoning Line



### 全自动包子生产线

Fully Automatic Bun Production Line

## 产品列表

### Product List

#### 真空搅拌机

##### Vacuum Mixer

- 整机采用不锈钢材料制作，坚固耐用、易于清洗；
- 可设定真空度，真空效果好，可使物料在真空状态下搅拌；
- 采用平行双轴螺旋结构，装有斜板桨叶及螺旋推进搅拌圈，搅拌均匀。
- The mixer is made of quality stainless steel, solid, durable and hygienic;
- Materials are mixed with high performance vacuum system; and vacuum can be set up;
- The parallel twin shafts equipped with palm vane and pushing ring make a uniform mixing result.



#### 真空斩拌机

##### Vacuum Bowl Cutter

- 整机采用优质不锈钢材料制作，坚固耐用、易于清洗；
- 采用最佳的可编程控制器和触摸屏，实现先进的操作控制；
- 温度、时间、转数可显示并设定，可控制最佳斩拌时间。
- High-quality Stainless Steel, solid, durable and hygienic;
- Advanced PLC &HMI (Human Machine Interface) control system;
- Temperature, Time and Bowl revolution can be displayed and controlled. It ensures the best chopping time control.



#### 冻、鲜肉绞肉机

##### Grinder for Frozen/Fresh Meat

绞肉机依靠螺杆旋转将料斗箱中的原料肉推到预切板处，通过螺杆的旋转作用，使得绞刀与孔板产生相对运动，从而将原料肉切成颗粒形状，确保了肉馅的均匀性。

Materials in the hopper are pushed to precut plate by the rotation of screw. The meat is cut to uniform particles through the relative movement between knife and hole plate caused by rotary screw.



## 烟熏炉

### Cooking & Smoking House

- 具有蒸煮、梯度蒸煮、干燥、烘烤、烟熏、加湿烟熏、排风、清洗等功能；
- 配置发烟系统，着色均匀、色泽好。可监控烟雾温度；
- 采用可编程控制器和大视窗触摸屏控制，生动直观地显示设备运行状态，可显示并控制温度、湿度、时间等工艺参数，并可在生产过程中随时调节参数。可进行单工艺操作，也可将九个以下的单工艺任意组合成配方进行生产，可存储100套不同配方。
- Various applications of Cooking, Gradient-cooking, Drying, Baking, Hot smoking, Moist smoking, Exhausting and Cleaning;
- Mount with smoking generators with uniform and perfect coloring. Temperature of smoke is monitored;
- Jixiang PLC&HMI control system shows you a graphic actual processing situation. The parameters, such as temperature, humidity, time and etc. can not only be preset but adjusted during processing. You can select the individual processing step, or you can also create a program by these nine steps. Up to 100 different programs can be created and stored.



## 真空滚揉机

### Vacuum Tumbler

本机采用不锈钢制作，结构合理、运行平稳、噪音小、性能可靠、操作简便、设备使用效率高。

This tumbler is made of quality stainless steel; reasonable structure, continuous running, low noises, reliable performance, easy operation and high efficiency.



## 盐水注射机

### Brine Injector

- 注射率可以任意设定调整；
- 步进及针头运动由变频器调节速度快慢；
- 特殊的注射针头，便于清洗；
- 盐水槽：选择滚筒过滤、盐水搅拌、制冷冷却装置。
- Injection rate can be set as desired;
- Stepping and needle box movement is adjusted by the frequency convertor;
- Special injection needle is easy cleaned;
- Brine tank: choose drum filter, brine stirring, refrigeration and cooling device.



# Company

## 公司概况

### 整体解决方案提供者 Overall Solution Provider



上海正牧建筑工程有限公司作为肉类食品全产业链基础设施建设的优质承包商，近三年公司团队完成六十多个养殖项目，包括猪场、虾场、鸡场、食品厂、饲料厂等EPC及基础设施建设，并持续拓展承揽其他领域项目，包括屠宰场等业务。

Shanghai Zhengmu Construction Engineering Co., Ltd. As a high quality contractor for the infrastructure construction of the entire meat food industry chain, the company's team has completed more than 60 breeding projects in the past three years, including EPC and infrastructure construction of swine farms, shrimp farms, chicken farms, food factories, feed factories, etc., and continues to expand and contract projects in other fields, including slaughterhouses and other businesses.



**总包二级资质**  
General Contractor  
Grade II Qualification



**质量、安全、环境体系认证**  
Quality, Safety and Environmental  
System Certification



**3A信用证书**  
3A Credit Certificate

### EPC交钥匙工程 EPC Turnkey Project

### 土建业务 Civil Engineering Business



## EPC模式 EPC mode

一站式服务/交钥匙工程为客户免除了在项目设计、设备采购、工程质量、施工周期、投资控制、安全施工等方面的后顾之忧。

One stop service/turnkey engineering eliminates customers' worries in project design, equipment procurement, engineering quality, construction cycle, investment control, safety construction, and other aspects.



---

# Company

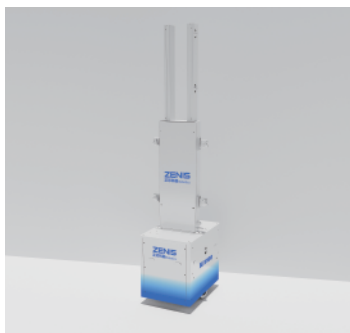
## 公司概况



上海正芯科融机器人科技有限公司成立于2023年，由上海正诚投资设立，致力于巡检机器人研发及工业机器人的集成应用，提升农牧食品行业自动化、智能化水平。公司经营范围包括技术服务、技术开发、技术咨询、技术交流、技术转让、技术推广，智能机器人的研发，工业机器人制造，智能机器人的研发，工业机器人制造，智能机器人销售，服务消费机器人制造，信息系统集成服务，机械设备研发，智能仓储装备销售，普通货物仓储服务，工程和技术研究和试验发展，人工智能公共数据平台，电子元器件批发，电子元器件零售，销售代理，软件开发，数字技术服务，物联网设备制造，物联网设备销售，物联网应用服务，物联网技术研发，物联网技术服务，信息咨询服务，信息技术咨询服务。

Shanghai Zhengxin Kerong Robot Technology Co., Ltd. was established in 2023 with investment from Shanghai Zhengcheng. It is committed to the research and development of inspection robots and the integrated application of industrial robots, improving the automation and intelligence level of the agricultural, animal husbandry and food industry. The company's scope of business includes technical services, technology development, technology consulting, technology exchange, technology transfer, technology promotion, research and development of intelligent robots, manufacturing of industrial robots, sales of intelligent robots, manufacturing of service consumer robots, information system integration services, mechanical equipment research and development, sales of intelligent warehousing equipment, general cargo warehousing services, engineering and technological research and experimental development, public data platform for artificial intelligence, wholesale of electronic components, retail of electronic components, sales agent, software development, digital technology services, IoT equipment manufacturing, IoT equipment sales, IoT application services, IoT technology research and development, IoT technology services, information consulting services, information technology consulting services.

## 机器人研发（自主研发·养殖场机器人） Robotics R&D (Self-developed · Farm Robot)



**鸡场巡检机器人**  
Chicken Farm Inspection Robot

- 温湿度、CO2、氨气、风速环境检测
- 自动充电、自动避障
- 远程操控，降低生物安全风险
- 后台数据分析，提高养殖价值



**猪场巡检机器人**  
Pig Farm Inspection Robot

- Temperature, humidity, CO2, ammonia, wind speed environmental detection
- Automatic charging, automatic obstacle avoidance
- Remote control to reduce biosecurity risks
- Background data analysis to increase the value of farming

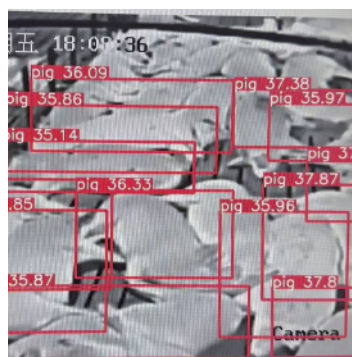


**轨道巡检机器人**  
Orbital inspection robot

## 机器人研发（算法开发） Robotics R&D (Algorithm Development)



**AI 数猪**  
AI Count Pigs



**AI 测温**  
AI Measure Temperature

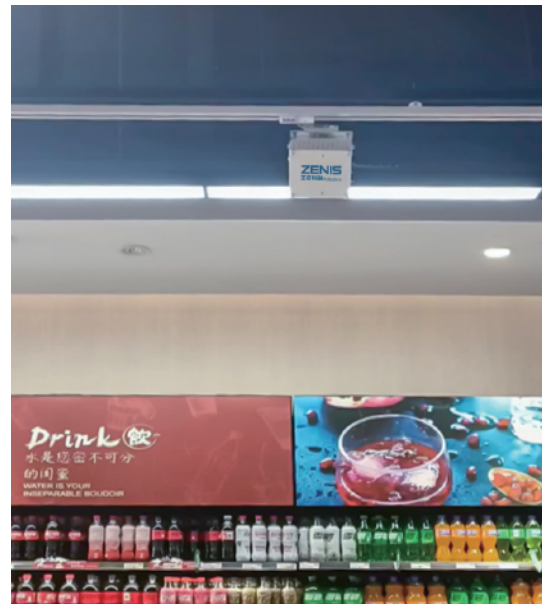


**通道数猪**  
AI Count Pigs in Channel

## 商超滑轨摄像头 Superstore Slide Camera



- 盘点货架缺货
- 巡检货品摆放问题
- 自动充电、自动避障
- Inventory of out-of-stock shelves
- Inspection of goods placement problems
- Automatic charging, automatic obstacle avoidance



## 机器人应用 Robotics Applications



**自动装箱、码垛**  
Automatic Case  
Loading and Palletising

整线由并联机器人、码垛机器人、开箱、封箱设备、输送设备、检测设备等组成：

- 纸箱自动开箱、封箱，物料自动输送整理、视觉识别定位，实现自动装箱工序，减少包材损耗，降低劳动强度，节省人力成本
- 采用机器进行装箱、码垛规范包装质量，提高产线生产效率
- 具备灵活、简便的操作方式，可以根据客户的要求，自动调整包装、码垛参数，实现自动换产。

The whole line is composed of parallel robots, palletising robots, carton opening and sealing equipment, conveying equipment, testing equipment and so on:

- Automatic carton opening and sealing, automatic material conveying and sorting, visual identification and positioning, automatic cartoning process, reducing package loss,

loss, reducing labour intensity and saving manpower costs.

- Adopting machines for carton loading and palletising to regulate the quality of packaging and improve the production line efficiency.

- Flexible and simple operation mode, according to customer's requirements, automatic adjustment of packaging and palletising parameters, to achieve automatic production change.



**立体库**  
Stereoscopic Storage

堆垛机立体库由卸货、整形、码垛、托盘输送设备、尺寸检测、堆垛机、货架与仓储系统等组成：

- 物料自动输送整形、码垛，视觉识别定位，实现自动码垛工序，提高卸货效率，节约人工成本；
- 物料与托盘自动入库、出库，实现自动化垛形检测，机器人拆垛，提升作业安全性与智能化程度；
- 自动化堆垛机与货架对接，可安全高效地完成入库、出库、回库、盘库等作业；
- 立体库具有完善的管理系统与控制系统，可实现控制室内对立体库自动化设备状态检测与报警、对物料信息精准把控，操作更加智能化、人性化。

The stacker crane three-dimensional warehouse consists of unloading, shaping, palletising, pallet conveying equipment, size detection, stacker cranes, racking and storage systems:

- Automatic material conveyor shaping and palletising, visual recognition and positioning, realising automatic palletising process, improving unloading efficiency and saving labour cost;
- Automatic material and pallet warehousing and depalletising, automated pallet shape detection and robot depalletising to enhance operational safety and intelligence;
- Automatic stacker cranes docking with shelves can safely and efficiently complete the operations of warehousing, warehousing, back to the warehouse, inventory and so on;

The three-dimensional warehouse has a perfect management system and control system, which can realise the state detection and alarm of three-dimensional warehouse automation equipments in the control room, precise control of material information, and more intelligent and humanized operation.

---

## 物联网（IoT）设备销售

IoT Equipment Sales



### 视频监控类

Video Surveillance

摄像机、交换机、存储、硬盘等

Cameras, Switches, Storage, Hard drives

### 数据传输类

Data Transmission

边缘计算盒子、物联网网关等

Edge computing boxes, IoT gateways

### 测量类传感器

Measurement Sensor

环境传感器、称重传感器、无线测温等

Environmental sensors, Load cells, Wireless temperature measurement

### 智能检测类

Intelligent Detection

人脸识别、电子价签、通道闸机等

Face recognition, Electronic price tags, Access gates

### 智能设备类

Smart Device

智能花洒、AGV、精准饲喂器等

Smart Shower, AGV, Precision Feeder

## 物联网（IoT）设备销售（自主研发）

### IoT Equipment Sales (Self-Developed)

#### 智能物联网数据采集器

Video Surveillance

##### 功能特点

数据传输：采用加密算法保障数据传输安全

数据采集：支持多种协议采集可定制任意协议

数据保护：大容量数据存储支持45天数据存储

OTA升级：可本地远程对设备固件程序进行升级

##### Functional Features

Data transmission: Adopt encryption algorithm to ensure the security of data transmission.

Data acquisition: Support multiple protocols acquisition can be customised any protocols.

Data protection: Large-capacity data storage supports 45 days of data storage.

OTA upgrade: Local remote upgrade of the device firmware programme.

##### 产品接口

1个RJ45接口

1个CAN接口

1个RS232接口

4G天线接口

1个RS485接口

##### Product Interface

1 RJ45 interface

1 CAN interface

1 RS232 interface

4G antenna interface

1 RS485 interface

##### 产品参数

工作宽温设计(-40℃~85℃)

电源宽压设计(6V~36V)

抗浪涌III级

EMC电磁兼容B级

工业级元器件

##### Product Parameter

Wide temperature design (-40℃~85℃)

Wide voltage design (6V~36V)

Anti-surge Class III

EMC electromagnetic compatibility class B

Industrial grade components

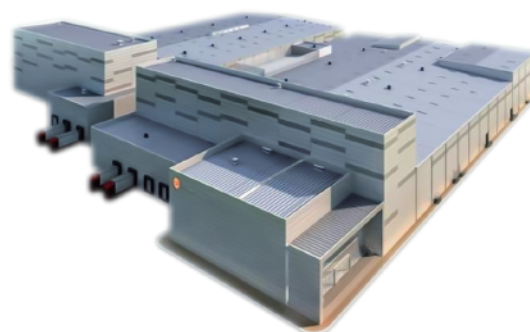


# 数字化解决方案及实施

## Digital solutions and implementation

### 1.工厂/农场数字化方案的规划设计

Planning and design of digitalisation programmes for factories/-farms



### 2.工厂/农场数据采集和物联网平台建设

Factory/farm data collection and IoT platform construction



### 3.应用PC、移动端软件开发

Application PC, mobile software development

### 4.数字化大屏

Digital Large Screen



### 5.AI算法开发

AI algorithm development





## 联系我们 Contact Us

### 上海正诚机电制造有限公司

Shanghai Zhengcheng Mechanical & Electrical Manufacturing Co., Ltd.

电话Tel: 021-57780134

传真Fax: 021-57782865

公司网址Web: <http://www.cpszhc.com/>

地址: 上海市松江区 茸北工业区茸兴路3-5号

No.3-5 Rongxing Road, Rongbei Industrial Zone, Songjiang, Shanghai

### 正大谷瑞机电有限公司

CP-GSI Machinery Co., Ltd.

电话Tel: 0574-63570358

地址: 浙江省慈溪市现代农业开发区三利路

Sanli Road, Modern Agriculture Development Zone, Cixi City, Zhejiang Province

### 上海正宜机器工程技术制造有限公司

Shanghai Zhengyi Machinery Engineering Technology Manufacturing Co., Ltd.

电话Tel: 4008200470

公司网址Web: <http://www.cpszy.com>

地址: 上海市松江区 茸北工业区茸兴路29号

No.29 Rongxing Road, Rongbei Industrial Zone, Songjiang, Shanghai

### 鑫百勤专用车辆有限公司

XinBaiQin Special Vehicle Co., Ltd.

电话Tel: 0574-63593070

传真Fax: 86-574-63593070

售后电话After-sale hotline: 0574-63593201

服务热线Service hotline: 400-098-1088

公司网址Web: [www.xinbaiqin.cn](http://www.xinbaiqin.cn)

地址: 浙江省慈溪市现代农业开发区三利路

Sanli Road, Modern Agriculture Development Zone, Cixi City, Zhejiang Province

### 正大汽车租赁有限公司

C.P. Vehicle leasing Co., Ltd.

电话Tel: 021-57781612/15940004018/18872250499 /15619221812

地址: 上海市松江区茸北工业区茸兴路3-5号

No.3-5 Rongxing Road, Rongbei Industrial Zone, Songjiang, Shanghai

### 上海正福食品机械工程有限公司

Shanghai Zhengfu Food Processing Machinery And Engineering Co., Ltd.

电话Tel: 021-57781621

地址: 上海市松江区茸北工业区茸兴路3-5号

No.3-5 Rongxing Road, Rongbei Industrial Zone, Songjiang, Shanghai

### 上海正牧建筑工程有限公司

Shanghai Zhengmu Construction Engineering Co., Ltd.

电话Tel: 021-57781615

地址: 上海市松江区茸北工业区茸兴路3-5号

No.3-5 Rongxing Road, Rongbei Industrial Zone, Songjiang, Shanghai

### 上海正芯科融机器人科技有限公司

Shanghai Zhengxin Kerong Robot Technology Co., Ltd.

电话Tel: 021-57781062

地址: 上海市松江区茸北工业区茸兴路3-5号5幢3层311室

No.3-5 Rongxing Road, Rongbei Industrial Zone, Songjiang, Shanghai



正大机电  
C P M & E

## 联系我们 Contact Us



猪场装备



鸡场装备



饲料装备



正牧建筑



正芯机器人



数智化系统



正大谷瑞



海外东北亚地区



环模业务



环保装备



海外东南亚地区



正福食品机械



鑫百勤车辆



包装材料



汽车租赁



地址：上海松江区茸北工业区茸兴路3-5号  
电话：021-57780134  
邮箱：cp-me@cpgroup.cn

Shanghai Zhengcheng Mechanical & Electrical Manufacturing Co., Ltd.  
Tel: 021-57780134  
No.3-5 Rongxing Road,Rongbei Industrial Zone,Songjiang,Shanghai



正大机电微信公众号



上海正诚官方网站



上海正宜官方网站



鑫百勤官方网站